

MOBILANE

BUILDING GREEN



MOBILANE

Mobilane first opened its doors in the Netherlands in 2000, as part of Darthuizer Group — a family-owned business with three subsidiaries: Darthuizer Nursery, Oase-Lease, and Mobilane. The Darthuizer Group has been synonymous with quality and innovation for nearly a century. Mobilane is a specialist in the development and sale of instant indoor and outdoor landscaping systems

INTERNATIONAL

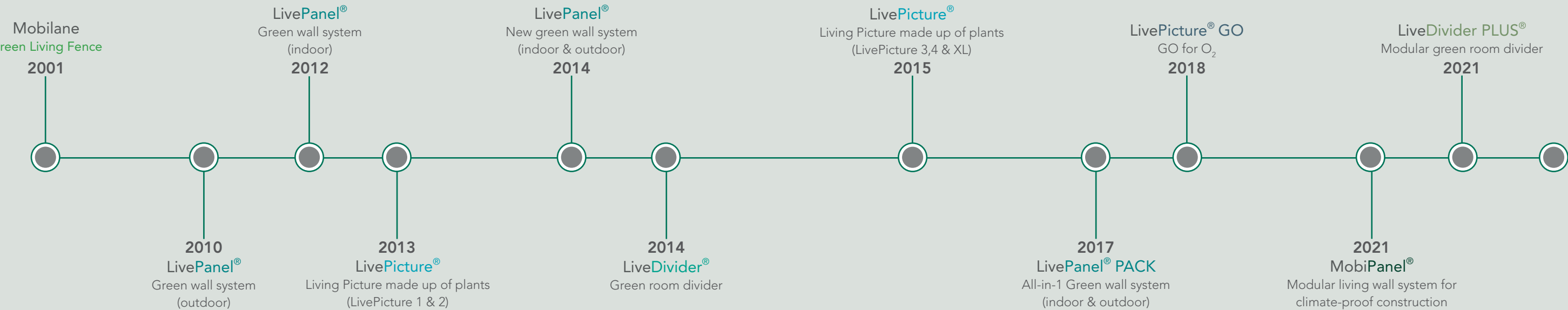
With experience, innovation, and passion as the foundations for its success, Mobilane is able to compete on the global market. Mobilane has offices in the Netherlands, Germany, Belgium, Hungary, South Africa, Hong Kong and the United States. Through a network of agents and dealers spanning more than 35 countries, Mobilane LiveProducts are available and accessible to everyone worldwide.

MOBILANE OFFICES WORLDWIDE

- The Netherlands
- Belgium
- Great Britain
- Germany
- South Africa
- Hong Kong
- United States
- Spain
- Argentina



PRODUCT DEVELOPMENT





WE CARE

We’re all about creating a better world, so it goes without saying that our corporate social responsibility (CSR) goals form a core tenet in our strategies, plans, and processes.

GREEN ENERGY

We work using different climate zones in our greenhouses. That way, we stop energy from going to waste. The climate zone we use for our young plants is heated using a mix of renewable energy sources. To achieve this, we’ve partnered with NEXTgarden, a neighboring collective energy garden. Together, we are committed to creating a climate-neutral horticultural production area through a range of great initiatives, from harnessing wind and solar energy, to energy storage, and the connection of our nursery to the sustainable heat network

CIRCULAR WATER SYSTEM

To water our plants, we use harvested rainwater from a pond on the nursery. We use this water for our closed cultivation system. Excess water not absorbed by the plants during irrigation is collected and reused. This collected water is cleaned using a UV filter to prevent the spread of potential bacteria and disease, before being stored in our outdoor reservoir. That way, no water goes to waste, and we are able to reduce our water footprint even further.

NATURAL PESTICIDES

We use organic pest control methods in our greenhouses. This means that to combat any harmful pests, we rely on their natural enemies. The control methods we use have been fully tested for safety and effectiveness and cause no harm to the environment.

A SOCIAL WORKPLACE

One of our goals is to manage our business with a social conscience. Our production nursery offers local employment to over 200 colleagues, providing regular and rewarding work to each and every one, in their local community.

BIODIVERSITY

Enhanced biodiversity helps the world thrive and survive. All our outdoor products make a positive contribution to biodiversity in the environment in which they are installed. Plant varieties and ecosystems improve air quality by producing oxygen, encourage the pollination of plants, help filter clean water, enrich fertile soil, and maintain a stable climate.





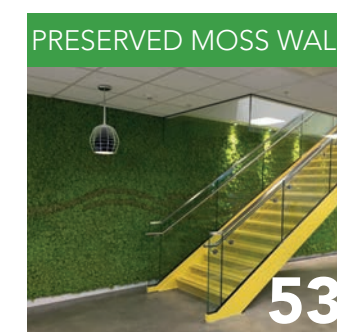
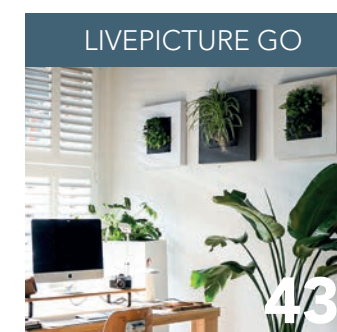
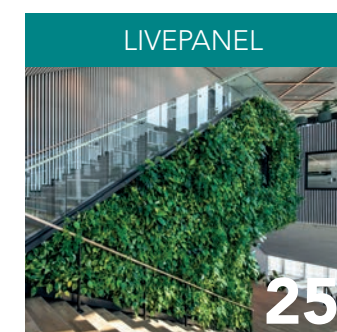
BUILDING GREEN

INDEX

OUTDOOR PRODUCTS



INDOOR PRODUCTS



OUTDOOR PRODUCTS

A photograph of a modern building with a large, lush green wall of climbing plants and flowers. The text "OUTDOOR PRODUCTS" is overlaid in large white letters. The building has a glass-enclosed upper section and a brick-paved walkway in the foreground.



Green Living Fence



Privacy matters to a lot of us. When you plant a green hedge as divider, it takes several years before the hedge starts to offer the densest cover. Mobilane's Green Living Fence eliminates that wait, as it enables you to install individual panels for an instant, densely planted hedge that looks like it has been established for many years!

BIODEGRADABLE POT

This patented Mobilane system consists of a metal grid that is entirely covered with vegetation. The plants are planted in compost in a biodegradable pot, which is attached to the bottom of the metal grid. The biodegradable pot is made from coconut fibers held together by natural latex. Once Mobilane's Green Living Fence has been planted, the entirely organic planter degrades within one to two years and the plants will root in the surrounding subsoil.

Green Living fences can be planted throughout the year, except during periods of frost. The hedges can be attached to either iron or wooden posts using specially designed brackets. Not everyone wants the same hedge, so Mobilane supplies a range of different types. This helps create variety with different types of plants, colors and heights.



As Green Living Fence comes in different versions, it can be used as divider in various ways, including to create garden rooms, or to partition off patios, swimming pools, or car ports. Green Living Fences can be used to conceal garbage cans and refuse areas. A Green Living Fence also looks great in a wooden container on balconies. In short, the possibilities are endless. With our tallest hedges reaching 86.61" and 118.11", Mobilane offers even greater privacy.

GREEN LIVING FENCE BENEFITS

- Instant privacy and greenery
- Easy and fast to install
- Contributes to biodiversity
- Contributes to a healthy environment
- Improves air quality
- Reduces fine dust by 40-60%
- Helps make urban areas greener

UNIQUE FEATURES

- Fully grown
- Available in different heights and types
- Certified sustainable production
- Can be planted throughout the year, except during periods of frost
- Biodegradable pot made of coconut fiber
- Environmentally friendly
- High-quality fencing with 10-year guarantee

Instant Green Living Fence



09

Easy and fast to install

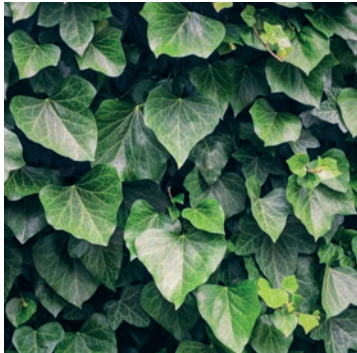
10

MOBILANE.COM

MOBILANE GREEN LIVING FENCE SPECIFICATIONS

Product	Size (w x h)	Accessories
Green Living Fence	47.24" x 39.37", 47.24" x 61.02", 47.24" x 70.87", 47.24" x 78.74", 47.24" x 86.61", 47.24" x 118.11"	Iron and softwood posts, brackets, grid extensions, garden doors, wooden planters

RANGE



Hedera helix 'Woerner'



Hedera helix 'Glacier'



Hedera helix 'Goldchild'



Hedera helix 'Green Ripple'



Hedera helix 'White Ripple'



Hedera hibernica



Carpinus betulus



Pyracantha 'Dart's Red'



Euonymus fort 'Dart's Blanket'



Trachelospermum jasminoides



Elaeagnus ebbingei

ADVICE

- The planting trench should be 15.75" deep. No water should pool, and the subsurface drainage must be good.
- In virtually all cases, the soil will need to be improved before the Green Living Fence elements are installed. Whether or not to do so depends on the local soil and site conditions. The soil also needs to be fertilized immediately after planting.
- Make sure the root ball is not hindered by obstacles (e.g. pieces of concrete, rubble, or other obstructions). A small, restricted root ball can result in plant damage, particularly during extreme heat or frost.
- Make sure there are no underground pipelines, cables, structures, or foundations that could be damaged when digging the site.
- The hedge should not be planted too deep as it can 'drown' if rainwater cannot drain away adequately.
- The hedge elements should also not be placed at the highest point, as they could dry out if all the rainwater runs off.





MobiPanel®

MobiPanel is an innovative, sustainable and lightweight system for living walls in existing buildings and new development projects. The latest generation of vertical greenery from Mobilane, this product has been specially developed to make future-proof and sustainable construction even more accessible. This unique modular system, with interchangeable plant cassettes in two sizes, makes it possible to lend both flat and curved walls a sustainable and vibrant appearance.

CLIMATE-PROOF CONSTRUCTION

With MobiPanel, it's easy to add greenery to both existing and new outer walls with different surface types. This not only looks wonderful, but also contributes to greater biodiversity, while purifying the air and controlling heat. MobiPanel is an outstanding system for sustainable building, climate-proof construction and creating a healthy and attractive living environment.

UNLIMITED OPTIONS

MobiPanel is a modular system, meaning there is no limit on the ways it can be used. The corrosion-resistant profiles can be installed both horizontally and vertically, depending on the format and layout of the backing wall. The profiles provide the bearing structure for the plant cassettes measuring 15.75" x 15.75", and the quarter cassettes (pixels) measuring 7.87" x 7.87".

SPACE FOR PLANTS

The plant cassettes come with two spacious slots for plants of varying sizes. As a result, MobiPanel lends itself to a broad range of plants, whether pre-grown or planted on site. The plants take up water from the internal water buffer through capillary microfiber textile. An automated irrigation and drainage system ensures an even supply of water and efficient water consumption.



For a sustainable and climate-proof future

13



MOBIPANEL BENEFITS

- Contributes to a greener living environment
- Boosts air quality by absorbing fine dust and generating oxygen
- Contributes to biodiversity
- Raises the value of your property
- Insulating and sound-dampening effects
- Captures rainwater
- Offers an instant green effect

UNIQUE FEATURES

- Suitable for flat and curved walls
- Suitable for various types of wall, including certain types of sandwich panels
- Interchangeable plant cassettes in two sizes (15.75" x 15.75" and 7.87" x 7.87")
- Economical water consumption
- Complies with fire rating B-s2, d0
- Reusable and fully recyclable
- Equipped with automated irrigation and drainage system
- Lightweight and space-saving
- Modular system
- Easy to install on new and existing outer and inner walls

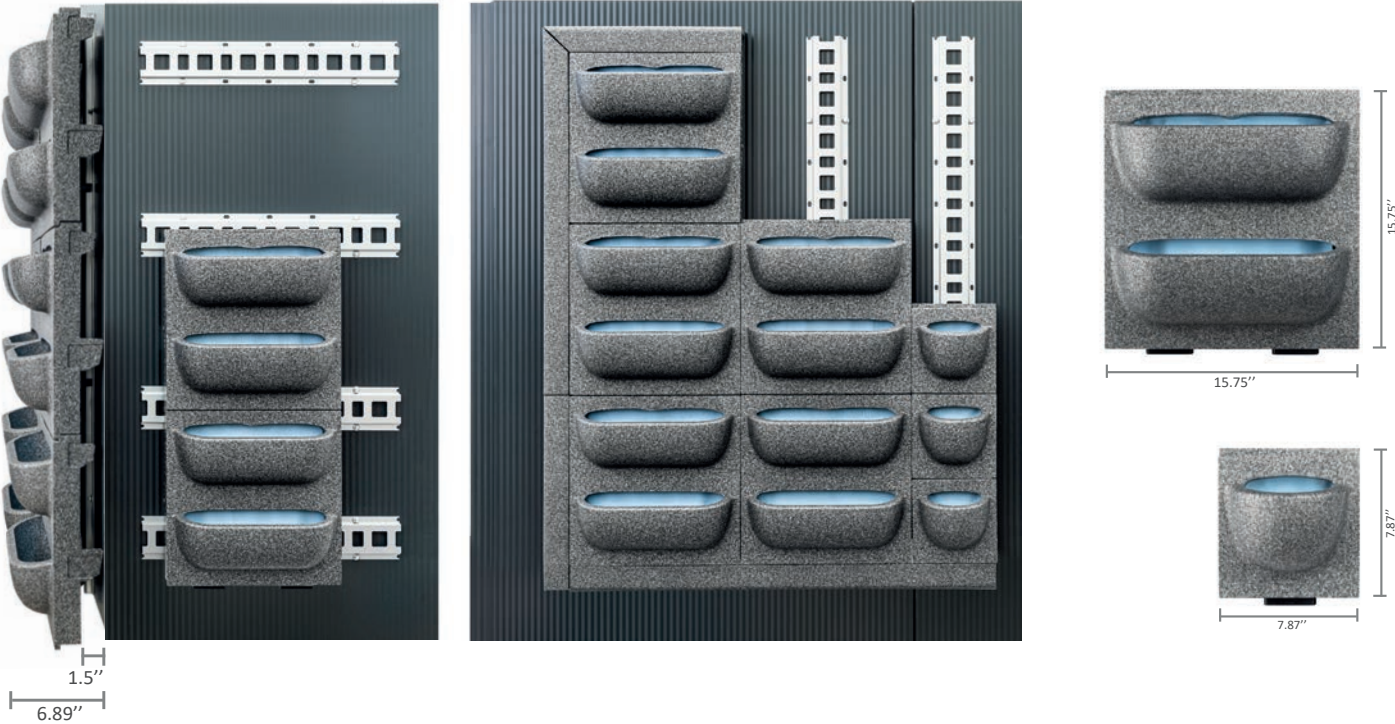
Creates green facades quick and easy
with an innovative and modular system

14

MOBILANE.COM

MOBIPANEL SPECIFICATIONS

Product	Size	Cassettes	Weight (incl. plants and water)
MobiPanel	Can be made in any size	The system consists of cassettes measuring 15.75" x 15.75" and pixels of 7.87" x 7.87"	Maximum system weight when fully planted: 949.21 lb/psf



FEATURES

- The cassettes are mounted on the backing wall using omega profiles made of Magnelis steel. These profiles are exceptionally resistant to corrosion and can be used both horizontally and vertically on many types of backing wall, including certain types of sandwich panels. The result is plenty of space for water pipes and electricity cables to be passed through.
- Proper ventilation of the outer wall is guaranteed by the 1.5" gap between the rear of the cassettes and the backing wall.
- The omega profiles and covers are a standard size (47.24") for efficient transport. They can be custom-made for large projects.

ADVICE

We recommend getting Mobilane involved as early as possible in the design and construction process to ensure technical aspects, such as the irrigation system and the piping and cabling, are designed as optimally as possible.





DNA InsectScan

Mobilane and SGS Search have joined forces to bring you DNA InsectScan for living walls: a new, unique and innovative method to measure the effectiveness of living walls for biodiversity. Due to its sampling simplicity, low processing time, accuracy and sensitivity, DNA InsectScan for living walls by SGS Search is an innovative and useful tool to keep track of biodiversity changes. Unlike traditional biodiversity surveys, DNA InsectScan uses insect environmental DNA (eDNA) to assess insect communities.

EXCLUSIVE PARTNERSHIP: MOBILANE X SGS SEARCH

SGS Search is an international engineering firm, consultancy firm, laboratory, and training institute specializing in the built environment, and how to make that environment more sustainable. Inspired by the environment, SGS Search endeavors to create a sustainable future — a mission shared by Mobilane. With InsectScan, our clients can now monitor and verify exactly how much richer the variety of insect species is getting. In doing so, we are delivering an even greater contribution to a green world for future generations.

DNA INSECTSCAN BENEFITS

- Monitor biodiversity effectively and at any scale
- Sampling could not be easier
- Helps quantify the success of biodiversity restoration campaigns in urban and natural environments
- Find out how your living wall is contributing to the ecosystem
- Monitor environmental impact through indicator species
- Can be used in ESG reporting

OUR DNA INSECTSCAN REPORT INCLUDES THE FOLLOWING ELEMENTS:

- Introduction, scope of work, and description of methodology
- Sampling plan and protocol
- Insect species identification overview (Taxa List) with various tables, charts, statistics, and other data
- Visual species overview
- Detailed sampling tables



Monitoring biodiversity

Insects of crucial importance

HOW DOES IT WORK?

Environmental DNA (E-DNA) is the genetic material released by an organism into the environment. This can come from numerous sources, including skin and hair being shed, body secretions, feces, seeds, and pollen. By deploying molecular techniques, E-DNA can be captured, amplified, and/or sequenced to identify the recent presence, relative abundance, and/or distribution of a given species, or entire communities.

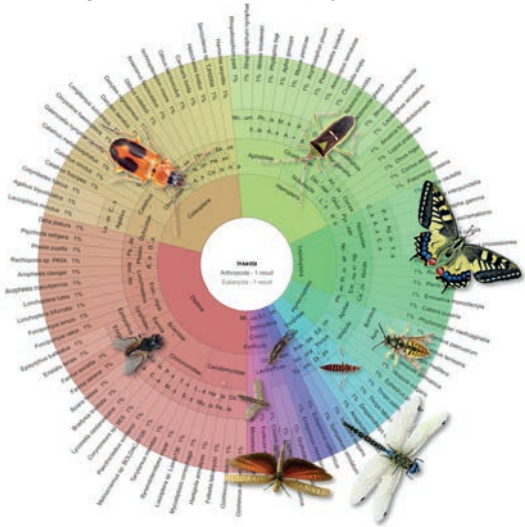
Samples for E-DNA analysis can come from anywhere, but for InsectScan, we focus on vegetation samples. We ask our clients to send us leaves, flowers, and branches from the living wall after pruning, so we can determine which insect species were present in that area. The technique is non-invasive and highly sensitive, allowing for the detection of almost all insect species, including those that are very small or difficult to identify visually. E-DNA has revolutionized our ability to analyze biodiversity at a fraction of the time it takes to conduct conventional ecological monitoring.

WHY DNA INSECTSCAN FOR LIVING WALLS?

We know that plants and soil in living walls contribute to biodiversity. But exactly how much of a positive effect do green facades have on insects? With Mobilane’s DNA InsectScan for living walls, it is now possible to quantify the positive effect of living walls on biodiversity in numbers. InsectScan offers a unique way to easily measure biodiversity using scientific methods. The data generated as a result are transparent and can be used in annual reports and sustainability reports for internal users and stakeholders. DNA InsectScan for living walls can also help you meet the requirements for sustainability certificates, such as BREEAM.

WHY DOES BIODIVERSITY MATTER

Insect populations are falling at an alarming rate, with several studies reporting losses of 40%. This has left us in an extremely critical situation, as insects are vital for the functioning of ecosystems: without them, humanity is in serious trouble. Insects pollinate flowers and plants, which makes them vitally important to the continued existence of the flora all around us. They also serve as a food source for other animals, like birds, fish, and spiders. If insects were to vanish from the planet, humanity would be left without plants — and as a direct result, without food.





NESTING & BEE BOXES

Insects such as bees are essential to the biodiversity of our planet. They play a crucial role as pollinators, and they contribute to the reproduction and development of our flora. The plants and flowers that grow as a result provide food and shelter to other animals, including humans. A professional bee hotel or nesting box provides a safe place for insects to nest, rest, and spend the winter.

PROFESSIONAL AND SUSTAINABLE

Our nesting boxes and bee hotels are made in a sheltered workshop using sustainable Dutch Douglas wood. All nesting boxes and bee hotels comply with the BIJ 12 guidelines. These boxes are the perfect tool to make sure you comply with any nature conservation laws, or to help you achieve BREEAM certification, which requires the installation of nesting boxes.

PLACEMENT ADVICE

Our nesting boxes and bee hotels can be placed in or around all Mobilane outdoor products. Each box should be assessed on a case-by-case basis to determine the best location. In doing so, factors such as building orientation, rain exposure, height, wind, and sun should all be considered. For example, bee hotels should be hung in a sunny but primarily wind-free location, up to a maximum height of two meters, preferably in a flower-rich environment. Nest boxes, on the other hand, should be hung in a quiet spot to make sure birds feel safe and can enter comfortably. Avoid placing nest boxes in direct sunlight; instead, make sure they offer shelter from the wind and space them some way apart. Nest boxes should be placed at a minimum height of two meters, while swift and bat boxes should be positioned at a minimum height of three meters.

Sustainable and social return



RANGE



Bee Hotel - House



Bee Hotel - Square (small)



Bee Hotel - Square (medium)



Bee Hotel - Square (large)



Bee Hotel - Honeycomb



Bat box



Swift box



Sparrow box

BREEAM certification

A modern interior space featuring a large, lush green living wall and a wooden staircase with a glass railing. The living wall is composed of various green plants, including ivy and ferns, growing in a vertical arrangement. The staircase has wooden steps and a glass railing with a wooden handrail. The ceiling is made of horizontal wooden slats, and the walls are also covered in vertical wooden slats. The overall atmosphere is bright and airy, with natural light streaming in from large windows on the right side of the image.

INDOOR PRODUCTS



LivePanel®

Our patented LivePanel system is a unique and innovative vertical green wall. These ‘living walls’ encompass real living plants, adding natural greenery to workplaces and living spaces, and helping to create a healthier, happier indoor climate.

MODULAR GREEN WALL SYSTEM

The LivePanel system transforms otherwise bare walls into attractive vibrant backdrops. LivePanel is a modular green wall system with exchangeable plant cassettes. The cassettes have slots in which greenery can be planted. Each row of plant cassettes is placed in a gutter profile that doubles up as a water reservoir. The plants absorb water from the reservoir through capillary action. The system can be installed on both new and existing walls.

VERTICAL GREEN

LivePanel can be used in a multitude of vertical greenery scenarios. Clients can build their green wall in any way that suits them, both in terms of design, layout, and plant choice. LivePanel is easy to install on many types of walls. This green wall adds an extra dimension to any room and is easy on the eye, yet it never fails to leave an impression: it will prove to be a real talking point in any interior.

LIVEPANEL INDOOR BENEFITS

- Vertical greenery takes up less space
- Improves the indoor climate and air quality
- Helps improve focus, productivity, and general wellbeing
- Improves the acoustics in a room
- Insulating and sound-dampening effects
- Lowers stress levels

UNIQUE FEATURES

- Available in any size
- Choose between a manual or automatic irrigation system
- Fully recyclable
- Low water consumption and no waste
- Slim system helps save space
- Interchangeable plant cassettes
- Easy and quick installation
- Modular system
- Total freedom in design and choice of plants

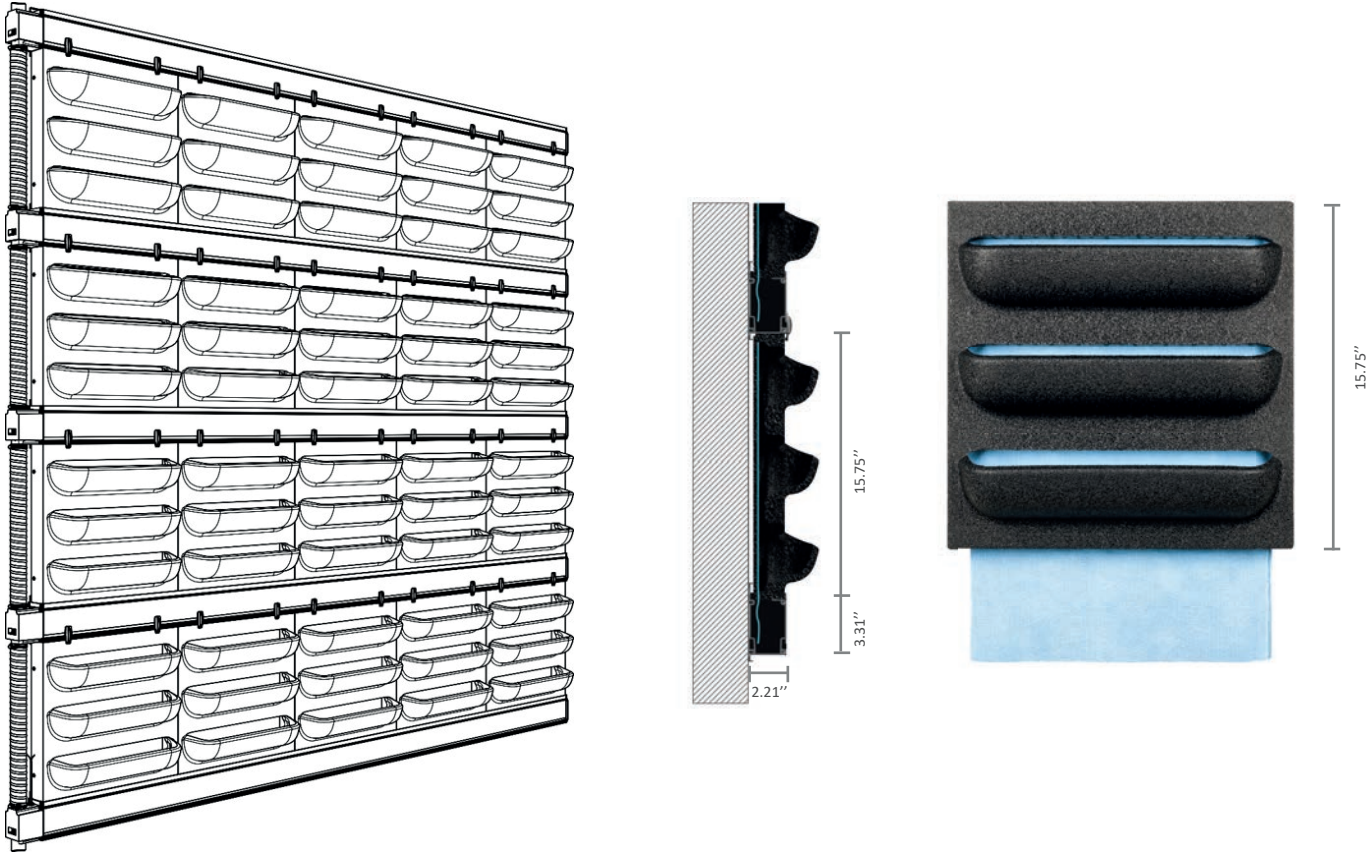
A sustainable plant wall

LivePanel – a real eye-catcher in any interior



LIVEPANEL SPECIFICATIONS

Product	Size	Cassettes	Weight (incl. plants and water)
LivePanel	Can be made in any size	Cassette size 15.75" x 15.75" The cassettes can be split into two horizontal sections	Maximum system weight when fully planted: 949.21 lb/psf



ADVICE

- For larger walls, we recommend installing an automatic irrigation unit. The average water consumption of the system is 0.12 gal / psf of landscaped surface per week. The exact figure depends on local conditions such as the type of plants, the ambient temperature, air conditioning, and light levels.
- Overflow/drainage must always be accounted for when using an automatic irrigation system.
- Water-resistant foil on the rear wall is recommended for indoor use.
- The tolerances in the aluminum profiles must also be taken into account in any calculations.



LIVEPANEL TANK SPECIFICATIONS

LivePanel TANK is an irrigation system for LivePanel indoor walls. The wall’s water supply is stored within the TANK, which is placed at the base of your LivePanel Indoor system. The TANK is filled manually, and the system is connected to the power supply for the pump and timer. The pump drives the water supply from the trough within the tank. As the system does not require connection to a water supply or drainage system, it is ultra-efficient in terms of water consumption.

WATER SUPPLY

The water supply within the tank is sufficient to irrigate a LivePanel wall for a few weeks. Exactly how many weeks depends on the height of the wall, i.e. the number of cassettes fitted on top of one another. The pump should generally be switched on once a week. The timer included with the system allows you to set the exact schedule, and also allows for irrigation outside of office hours. Plant food should be added to the water supply within the tank.

DIMENSIONS

The LivePanel TANK can be used for LivePanel Indoor walls with a maximum of 10 x 10 cassettes. Each cassette measures 15.75” x 15.75”. The tank is 16.54” high and 6.89” or 11.81” deep. Its width is determined by the width of the LivePanel wall. For the ultimate finish, an optional matching frame can be placed around the cassettes. This adds a nice finishing touch to the system and lends it a luxurious overall look.

LIVEPANEL TANK BENEFITS

- Efficient water consumption and no waste
- Water tank for ± 4 weeks depending on the size of the wall
- No water inlet or outlet required
- Low maintenance

UNIQUE FEATURES

- Slim system helps save space
- Integrated watering system
- Modular system
- Easy and quick installation
- Fully recyclable





LivePanel PACK®

READY-MADE GREEN WALL AS STANDARD

LivePanel PACK is a green wall system available in four standard dimensions. It is delivered as a ready-made package. This modular green wall system can easily and quickly be converted into a green wall. It is the ideal solution for spaces with one or more smaller wall surfaces. The LivePanel PACK modular green wall system consists of large gutter profiles fitted with a water tank that is filled by hand, and with interchangeable plant cassettes with slots. These profiles can easily be filled with water manually.

SPACE-SAVING

LivePanel PACK can be fitted to new or existing walls in indoor or outdoor environments. The various sizes and creative plant options available make LivePanel PACK a flexible, space-saving green wall system that can be used in an endless number of ways.



LIVEPANEL PACK BENEFITS

- Vertical greenery takes up less space
- Improves the indoor climate and air quality
- Helps improve focus, productivity, and general wellbeing
- Improves the acoustics in a room
- Insulating and sound-dampening effects
- Lowers stress levels

UNIQUE FEATURES

- Manual watering
- Available in four sizes
- No electricity, pump, or water drainage required
- Low water consumption and no waste
- Slim system helps save space
- Interchangeable plant cassettes
- Easy and quick installation
- Fully recyclable
- Total freedom in design and choice of plants

All-in-one green wall system



31

Space-saving and easy to install

32

MOBILANE.COM

LIVEPANEL PACK SPECIFICATIONS

Product	Dimensions (W x H)	Number of cassettes	Weight (empty)	Water volume
LivePanel PACK 2 x 2	81,1" x 97,6"	4	23.81 lb	1.1 gal
LivePanel PACK 2 x 3	34.3" x 61.8"	6	33.5 lb	2.0 gal
LivePanel PACK 3 x 2	50.0" x 42.9"	6	35.27 lb	2.0 gal
LivePanel PACK 6 x 4	97.6" x 81.1"	24	165.0 kg	8.0 gal



2 X 2



2 X 3



3 X 2



6 X 4





LiveDivider PLUS®

LiveDivider PLUS is a modular, green room divider. In this unique system, modules with interchangeable cassettes that serve as planters can be stacked on top of one another in any way you prefer. This gives you more freedom to partition spaces in a flexible way, all while surrounding people with greenery. Remote working and flexible workstations have emerged as the new standard in the design and refurbishment of offices. Today, office spaces are increasingly serving as places where employees come to meet each other in an environment that inspires them and makes them feel at ease. Plants are a valuable tool in creating that type of environment.

PRIVACY AND DISTANCE

LiveDivider PLUS makes it easy to arrange and partition large spaces exactly as you want. This is precisely what makes this room divider so well suited for use in offices, waiting rooms, hotels, public buildings, and more. This room divider also serves as an ideal solution for defining pedestrian routes for social distancing. Plants enhance the space and improve the well-being of employees and visitors. LiveDivider PLUS creates more privacy and distance while retaining the open character of any given space. The system consists of individual modules made of steel, with interchangeable cassettes that serve as planters. Plants can be interchanged to adapt to the season, theme, or a specific occasion.

DESIGNER FURNITURE

This modern and timeless room divider is made of high quality, powder-coated steel. Its streamlined design and sleek lines turn it into a statement piece that is guaranteed to leave an impression in any interior. The modules are installed on a solid base plate. A watering system with a tank is incorporated into each module. This ensures that the plants are supplied with the right amount of water and plant food for up to six weeks. LiveDivider PLUS does not require any electricity, pumps, or drainage systems, meaning it can be installed in all kinds of different places.



LIVEDIVIDER PLUS BENEFITS

- A simple and sustainable way to partition spaces
- Improves acoustics and dampens sound
- Improves the indoor climate and air quality
- Improves focus, productivity, and general well-being; reduces stress
- Takes up little space

UNIQUE FEATURES

- Modular and highly versatile
- Water supply guaranteed for 4-6 weeks, with water level gauge
- Sustainable, reusable, and fully recyclable
- No electricity, pump, or water drainage required
- Low maintenance
- High quality design
- Free-standing with plants on both sides
- Interchangeable planter cassettes with space for different types of plants



Green and sustainable room divider

35

Clever stackable system

36

MOBILANE.COM

SPECIFICATIONS LIVEDIVIDER PLUS

Description	Dimensions (W x H x D)	Number of cassettes	Weight (empty)	Water volume
LiveDivider PLUS 1	31.9" x 44.5" x 7.5"	4	126.55 lb	4.62 gal
LiveDivider PLUS 2	51.6" x 44.5" x 7.5"	8	167.55 lb	9.25 gal
LiveDivider PLUS 3	71.0" x 44.5" x 7.5"	12	210.0 lb	20.3 gal



LiveDivider PLUS 1 LiveDivider PLUS 2 LiveDivider PLUS 3

8cm 19cm 8cm



30cm



AVAILABLE COLORS



White



Black



Custom

The LiveDivider PLUS is available in white and black as a standard and can be supplied in any RAL colour on request.





LivePicture®



LivePicture embodies innovation, design, and landscaping to deliver stunning effects. The frame includes an integrated watering system with reservoir to ensure that the plants can access all the water they need for four to six weeks. The innovative, patented design requires no electrical connection. LivePicture can easily and quickly be hung on any wall using just a few screws.

HEALTHY INDOOR CLIMATE

Plants deliver an important contribution to the indoor climate through the oxygen they produce, the fact that they purify the air, and the positive effect they have on relative humidity. Scientific research has shown that anyone who spends more than four hours per day in a room with plants will have a more pleasant experience and will be demonstrably more productive.

SPACE-SAVING

LivePicture serves as a stylish and space-saving way to include plants in any indoor environment. Rooms with limited space for plant pots in particular stand to benefit from LivePictures mounted to the wall. LivePicture requires minimal maintenance.



LIVEPICTURE BENEFITS

- Vertical greenery takes up less space
- Improves the indoor climate and air quality
- Helps improve focus, productivity, and general well-being
- Improves the acoustics in a room
- Sound-dampening effects
- Lowers stress levels

UNIQUE FEATURES

- Unique visual impact
- Water tank lasting 4-6 weeks, with 'full' and 'empty' gauge
- No electricity or pump required
- Fully recyclable
- Interchangeable plant cassettes and frame
- Integrated watering system
- Quick and easy installation
- For indoor and outdoor use

Living picture made of plants



39

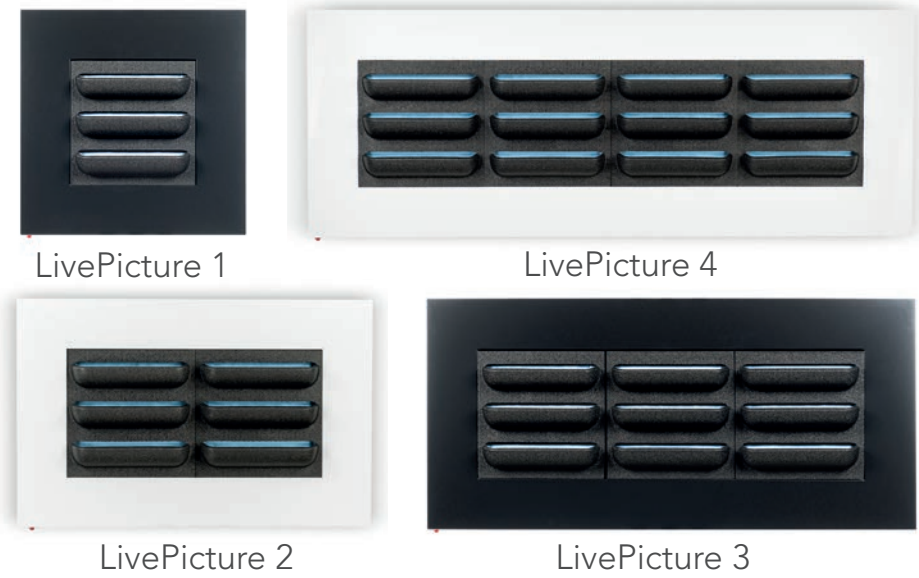
Natural green with a modern twist

40

MOBILANE.COM

LIVEPICTURE SPECIFICATIONS

Product	Dimensions (W x H x D)	Number of cassettes	Weight (empty)	Water volume
LivePicture 1	28.5" x 28.5" x 2.75"	1	26.5 lb	3.7 gal
LivePicture 2	28.5" x 44.5" x 2.75"	2	36.5 lb	5.0 gal
LivePicture 3	28.5" x 60" x 2.75"	3	46.5 lb	6.3 gal
LivePicture 4	28.5" x 76" x 2.75"	4	56.0 lb	7.7 gal



AVAILABLE COLORS



Other (RAL) colors and personalization using your own logo, design, or photo are available on request.





LivePicture GO®



LivePicture GO offers a playful way to add vertical greenery to your living, learning, or working environment. Even if you're not green-fingered, the plants stay healthy and beautiful without much effort. The LivePicture GO 'empty' gauge shows when the water tank needs to be filled. The tank holds enough to water the plants for approx. 4 weeks. The capillary technology of the plant cassette ensures the plants always get the right amount of water.

SIMPLY GREEN

The slots in the removable plant cassette can be filled with plants in line with your own preferences and tastes. LivePicture GO is highly versatile; it can be used indoors and outdoors, as a single unit or in a modular setup. Creating a playful collage is easy using multiple LivePicture GO units. This living picture is simple to install using the two screws and installation template provided.

LIVEPICTURE GO BAMBOO

LivePicture GO Bamboo is made of sustainable bamboo fibers. Bamboo is a natural and sustainable material with a low environmental impact. Bamboo is biodegradable and 100% recyclable. This natural and sustainable material ensures that all LivePicture GO units are unique. It's not just the plants that make LivePicture GO Bamboo the perfect green solution; it's the frame too.



LIVEPICTURE GO BENEFITS

- Vertical greenery takes up less space
- Improves the indoor climate and air quality
- Helps improve focus, productivity, and general wellbeing
- Improves the acoustics in a room
- Sound-dampening effects
- Lowers stress levels

UNIQUE FEATURES

- Water tank lasting approx. 4 weeks, with 'full' and 'empty' gauge
- No electricity or pump required
- Fully recyclable
- Interchangeable plant cassettes
- Lightweight
- Integrated watering system
- Quick and easy installation
- For indoor and outdoor use*

*LivePicture GO White can be used outdoors.

A Plant painting for home

43



Add vertical greenery in a playful way

44

MOBILANE.COM

LIVEPICTURE GO SPECIFICATIONS

Product	Dimensions (W x H x D)	Number of cassettes	Weight (empty)	Water volume
LivePicture GO	20.3" x 20.3" x 4.4"	1	6.0 lb	0.5 gal

1.97" 2.36"



AVAILABLE COLORS



White



Bamboo
Natural



Bamboo
Black

Other (RAL) colors and personalization using your own logo, design, or photo are available on request.





LiveSpectrum®

The success of your LivePicture GO, LivePicture, LivePanel Indoor, or LivePanel PACK installation depends on how much access it has to light. Not all locations have sufficient light exposure — the ‘daylight spectrum’ — that plants need for healthy growth. LiveSpectrum is a series of light fittings that have been specially developed to mimic and emulate natural daylight.

These LED fixtures offer full spectrum color rendering and are available in a range of light intensities. The LiveSpectrum light fittings (lighting units) are suitable for surface-mounted or recessed installation into ceilings and come equipped with energy-saving long-life LEDs. The LED lights are also dimmable to allow the user to select a suitable brightness level for all LivePicture and LivePanel products.

LIVESPECTRUM LUMISSION FEATURES

- Color temperatures available: 3000 K (warm white) or 4000 K (natural white)
- Perfectly mimics natural light
- LED module shielded with glass
- Light fittings can be rotated and tilted to suit
- Individual lights can be dimmed separately



LIVESPECTRUM PARUS FEATURES

- A Grow White light, with a suitable spectrum for plants
- 30-120° lenses to group or spread the reach of the light
- Easy to attach to ceiling systems
- Can be suspended using a suspension fitting
- Available in different sizes (23.62", 35.43", 47.24" and 59.06")
- Optional: Light fittings can be dimmed using a ‘smart’ controller and timer: 0~100%



LIVESPECTRUM MOBILIGHT FEATURES

- Color temperatures available from warm to natural white; 2700 K, 3000 K, 3500 K, and 4000 K
- Perfectly mimics natural light temperatures
- Adjustable light fitting with three-phase track
- Horizontally rotatable through 350° and vertically adjustable through 90°
- Easy to attach to ceiling systems
- Can be suspended using a suspension fitting
- Lens and reflector options available to group or spread light reach
- Light fittings available in white, silver grey, and black
- Light fittings can be dimmed (Bluetooth)



LiveSpectrum - Providing a natural daylight alternative using led

47

LiveSpectrum helps support vital access to daylight

48

MOBILANE.COM





Artificial Green Wall

The artificial plants closely resemble their living counterparts. Each plant is assembled by hand and carefully arranged into our Artificial green Wall custom panel designs. With the appearance of real plants, but none of the required environmental conditions or maintenance, artificial green walls are the perfect solution to cultivating a green space where it may not typically be practical. Lightweight and easy to install, our panels are suitable for any residential or commercial application.

VERTICALLY GREEN

The artificial plant walls can be used in a variety of vertical green scenarios where creating living plants may not be practical, like a bathroom, restroom or other places with little light. The artificial plants bring a certain liveliness to a room.

TWO STANDARD OPTIONS

Artificial Green Wall is available in two standard options. Leafy Green for indoor or short-term applications or Lush Green UV-rated/fire retardant, suitable for long-term outdoor applications. To the two standard options, accent plants can be added to create a unique look.



ARTIFICIAL GREEN WALL BENEFITS

- Vertical greenery takes up less space
- Lightweight and easy to install
- No water, light and maintenance required

UNIQUE FEATURES

- Space saving and slim system
- Two standard options available
- Twelve additional 'loose plant' options available to customize panels with different colours and texture
- Powder coated steel mesh backer panel
- Premium quality artificial plants are hand-affixed to the backer panel
- UV protection and fireproof panels available
- Easy to install with included mounting hardware



Two standard options:
Leafy Green or Lush Green

49

Bring a certain liveliness to a room

50

MOBILANE.COM

ARTIFICIAL GREEN WALL SPECIFICATIONS

Product	Size	Panels	Weight
Artificial Green Wall	Can be made in any size	The system consists of Panels measuring 35.43" x 35.43"	Maximum weight each panel: 14.99 lb



LEAFY GREEN



LUSH GREEN

ACCENT PLANT OPTIONS



Long Stem River Grass Plant



Milan Leaves - White Flowers



Sharp Leaves Purple



White Lavender



Pink Lavender



Yellow Edge Plant



Small Fern



White Edge Plant



Brown Edge Plant



Lush Green Plus White



Purple Lavender



Light Purple Lavender





Preserved Moss Walls

Moss is a special kind of green wall medium. It is neither living or artificial - it is the preserved form of a once living organism. Since it is not alive, it does not require any water or light. Moss retains its fluffy texture through the preservation process, making it a great product for sound absorption and acoustics.

100% NATURAL MOSS

We produce our moss walls in any size. Large and small. Our 100% natural moss can fill an entire wall, a number of panels or just the counter in the reception area. The Preserved Moss Walls are available in three varieties; Rendier, Pole Moss and Flat/Shees Moss. Mossart creations are made with preserved moss, that requires no watering, light or trimming. The eco-friendly process of preserving the moss consists of replacing the water in the plant with glycerine. As there is no longer any water in the plant, it will never dry out and will maintain its natural texture. The preserved moss does not require any watering, or light, or trimming of any sort as it is no longer living. Harvested according to ecological practices, the moss is then dyed using natural food dyes. The product does not seem to collect much dust but we recommend using an air gun or air blower to clean the moss once in a while.

CUSTOM DESIGNS

Custom designs available upon request. We currently offer 12 different shades of moss that can be used to create unique and custom designs, such as frames, wall tiles, and logos. As Mossart creations contain no water, the moss can also be integrated to any kind of furniture design without the risk of water damage.

PRESERVED MOSS WALL BENEFITS

- Vertical greenery takes up little space
- Improves the acoustics in a room
- No water, light or trimming required

UNIQUE FEATURES

- Available in any size
- Space saving and slim system
- Easy and quick installation
- Suitable for all indoor areas
- 100% natural
- Available in 12 different shades of moss
- Custom design upon request



100% Natural Moss

Preserved form of once living organism

PRESERVED MOSS WALL SPECIFICATIONS

Product	Size	Weight
Preserved Moss Walls	Can be made in any size	Maximum weight: 1613.66 lb / psf

SHADES OF MOSS





WE CARE

Our mission is to create **green, healthy** and **sustainable** environments.

DARTHUIZER PRODUCTION

