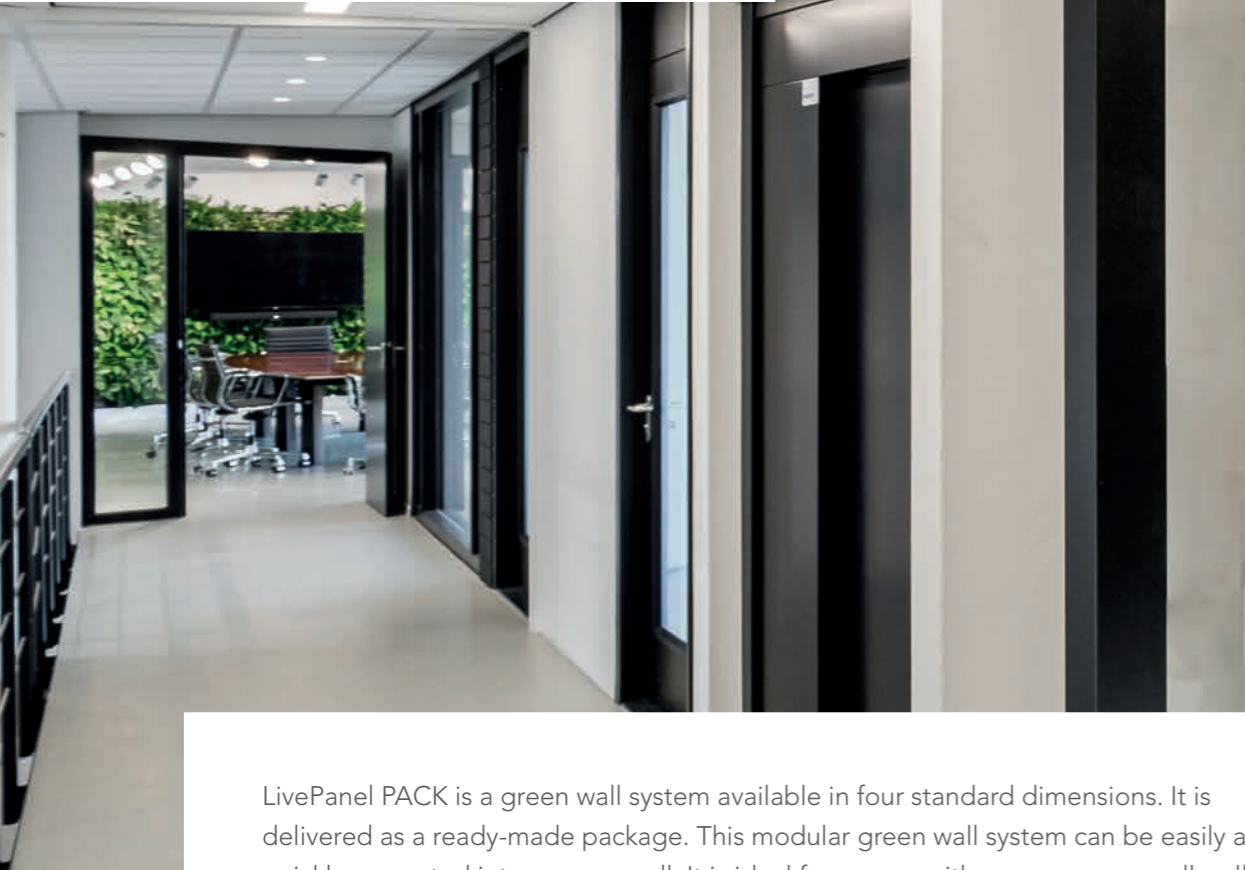


LIVE PANEL PACK



LIVEPANEL PACK



LivePanel PACK is a green wall system available in four standard dimensions. It is delivered as a ready-made package. This modular green wall system can be easily and quickly converted into a green wall. It is ideal for spaces with one or more small wall surfaces. The modular green wall system consists of large gutter profiles fitted with a water tank that is filled by hand, and with interchangeable plant cassettes with slots. These profiles are easily filled manually with water.

SPACE-SAVING

LivePanel PACK can be affixed to new or existing walls in indoor or outdoor environments. The various sizes and creative plant options make LivePanel PACK a flexible, space-saving green wall system with an unlimited range of applications.



LIVEPANEL PACK MATERIALS



Cassettes: The cassettes are made of breathable Expanded Polypropylene (EPP) material on the front side, Polypropylene (PP) on the backside. The cassette is fitted with microfibre textile with capillary action consisting of 80% polyester and 20% polyamide. Returned cassettes are fitted with a new microfibre textile on our production site and reused.

Fire-retardant cassettes: The cassettes is also available in grey EPP with fire-retardant. The green wall complies with fire classification B-s2, d0.

Gutter profiles and mounting materials: The aluminum extruded gutter profiles are made of alloy AL 6063 T5. The profiles are black anodised. Because of this, the profiles have optimal corrosion resistance and can be used outdoors. The mounting material for installing the profiles is of A2 stainless steel quality. The profiles are provided with end and transit caps made of fiberglass polyamide that is attached to the profile with self-tapping screws. Between the end caps and profiles, there is an EPDM rubber seal. The transit caps are fitted with hose tails where a plastic hose is mounted with stainless steel hose clamps



Planting: The plants used in the pre-cultivated cassettes in the LivePanel PACK are grown at the Dartplant production site under the "On the way to PlanetProof" certification. This independent certification proves that the plants for the LivePanel PACK have been produced more sustainably and are therefore a better choice for nature, climate and animals. The online Mobilane PlantGuide gives an overview of selected plant species that are recommended for planting on the LivePanel PACK.



UNIQUE FEATURES

Manual watering

Available in four sizes

No electricity, pump or water drainage required

Space saving and slim system

Economical water consumption and no waste

Interchangeable plant cassettes

Easy and quick installation

Freedom in design and plant choice

Fully recyclable



BENEFITS

Vertical greenery takes up little space

Improves the indoor climate and air quality

Helps increase concentration, productivity and general well-being

Improves the acoustics in a room

Insulating and sound-dampening effects

Lowers stress levels



2 X 2



2 X 3



3 X 2



6 X 4

SPECIFICATIONS LIVEPANEL PACK

Product	Dimensions (w x h)	Number of cassettes	Weight (empty)	Volume (in litres)
LivePanel PACK 2 x 2	87 x 109 cm	4	11 kg	4.2 litres
LivePanel PACK 2 x 3	87 x 157 cm	6	15.2 kg	6.3 litres
LivePanel PACK 3 x 2	127 x 109 cm	6	16 kg	6.3 litres
LivePanel PACK 6 x 4	248 x 206 cm	24	51.6 kg	24.5 litres

INSTALLATION & MAINTENANCE

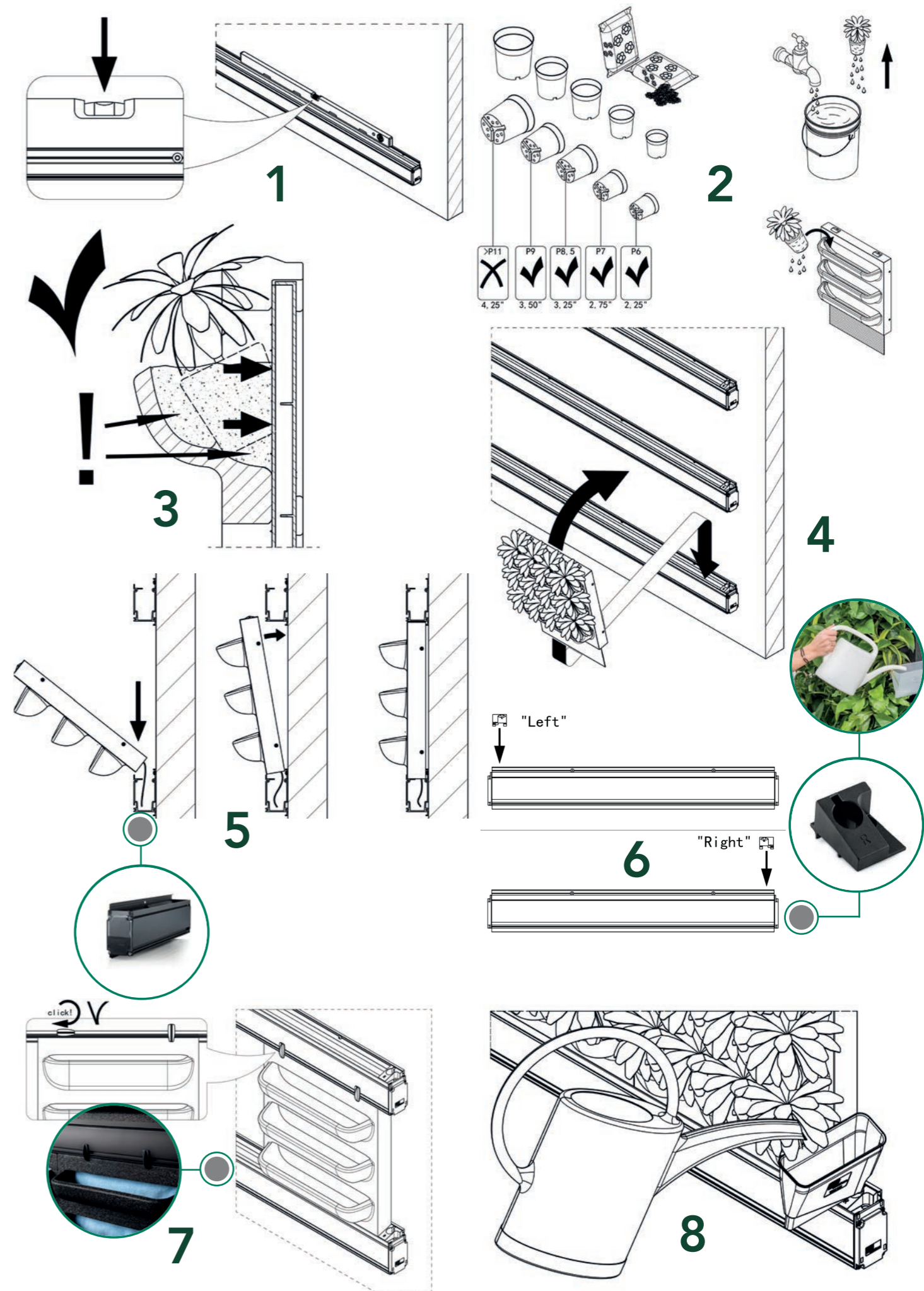
For installing the LivePanel PACK, a level, pencil, and drill are required. All mounting materials are supplied. The LivePicture comes with instructions and the gutter profiles can be easily mounted on a vertical surface with a few screws. The slots of the removable plant cassettes can be planted according to your own preference and taste. The choice of plants is dependent on the location where the LivePanel PACK is placed. Have a look at our PlantGuide at our website for tips.

WATERING

Due to the low maintenance system, the plants stay beautiful and lively for many years. The water reservoir is sufficient to provide the plants with water for approximately 2 weeks (indoor). The LivePanel PACK can be installed in any desired location place since no electricity or pump is required, provided that the lighting conditions are good. Through the transparent endcaps, it can be seen when the water reservoir needs to be filled with water. The capillary action of the plant cassettes provides the plants with the right amount of water. The gutter profiles can be cleaned with a soft microfibre cloth and mild soap. The use of aggressive cleaning products is not recommended.

PRUNING

Pruning of the plants in the cassettes can be done throughout the year. By pruning the dead or unhealthy parts, new growth is stimulated. The planting becomes more compact, fuller and retains its fresh appearance.



REFERENCES AND APPLICATIONS



OFFICES



RESIDENTIAL



OFFICES



RESIDENTIAL

