



WALLPLANTER

WALLPLANTER

In 2002 Mobilane developed the WallPlanter living wall system incorporating the innovative Mobilane Green Screen fencing. WallPlanter is now a tried and tested product providing an instant fully planted finish which has proven to be highly successful over a number of years on both new and existing facades. WallPlanter consists of large specifically designed customized aluminium planters in which fully grown hedge elements (Mobilane Green Screen) can be placed.

IRRIGATION AND DRAINAGE SYSTEM

These planters are placed on the facade of the project. These buildings include: car parks, hotels, office buildings. Using a fully automated irrigation and drainage system, hedges receive water and nutrients, allowing the hedge to develop, keeping the green facade looking spectacular year after year. A green facade adds to the attraction of the area for residents, visitors and potential buyers.



WALLPLANTER MATERIALS



Coconut fibre container: The coconut fibre container consists of coconut fibre held together by natural latex. This container is made from 100% biological material and is 100% degradable.

Steel grid and brackets: : Steel grid and brackets: The Mobilane Green Screen consists of a galvanised steel grid that is 100% recyclable. The brackets for the wooden posts are made from galvanised iron. The brackets for the metal posts are galvanised and green coated. Both are fully recyclable.

Aluminium planters: The planters in which the Green Screens are placed are made of recyclable aluminium. The planters include insulation, a drainage system and a specially composed substrate. According to preferences, the planters can be supplied with front cover planting and/or a powder coat.



Planting: The plants that are used in the pre-grown aluminium planters in the WallPlanter system are grown at the Dartplant production site under "On the way to PlantProof" certification. This independent certification proves that the plants for the WallPlanter have been produced more sustainably and therefore a better choice for nature, climate and animals.



UNIQUE FEATURES

Suitable for all surfaces and planes

Equipped with automatic irrigation system

Fully grown

Low water consumption

Reduces fine dust by 40 - 60%

Fully recyclable

Low maintenance

Double-sided greenery
(on multi-storey car parks)

BENEFITS

Contributes to the greening of urban areas

Contributes to a healthy environment

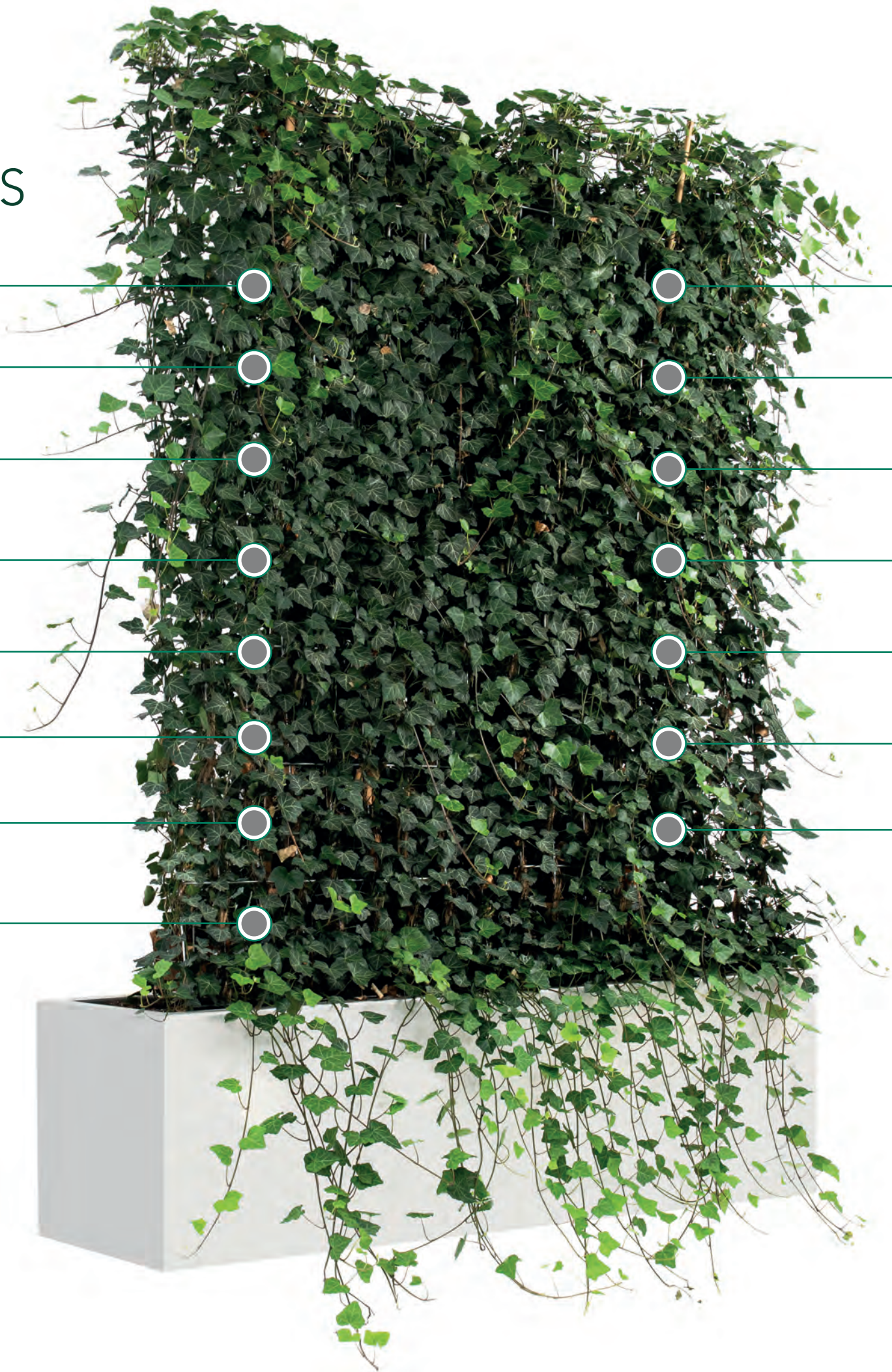
Contributes to biodiversity

Improves air quality

Increase in value for real estate

Insulating effect

Prevention of graffiti



INSTALLATION

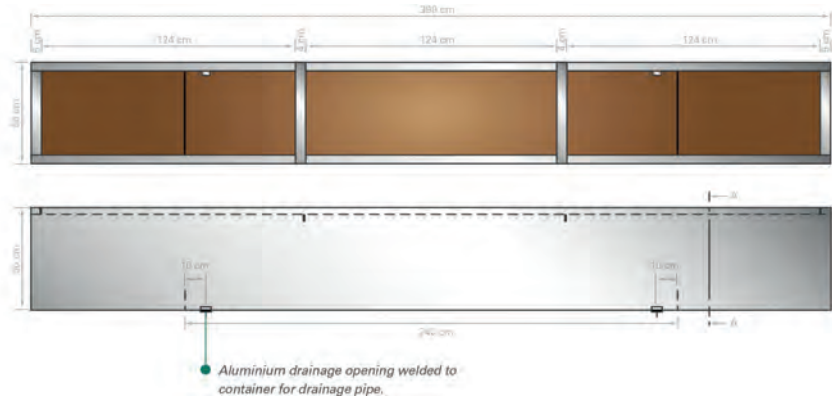


SUPPORTING STRUCTURE

Due to the weight of the WallPlanter elements, a robust support structure is necessary. This supporting structure, depending on the strength of the wall and the foundation, is attached to the wall or resting on the base. Apply to support construction: The planters will be installed on the support structure using a crane.

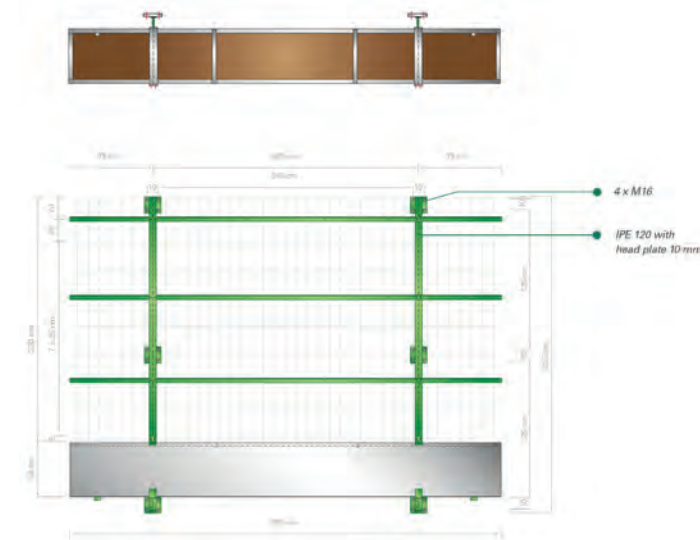
IRRIGATION

Each planter is supplied with water and nutrients through an irrigation system. In order to avoid too much water remaining in the plant (for example, in heavy rain), each plant container is also provided with drainage. This also ensures the supply of oxygen to the plant roots. For the supply of water and nutrients a technical area of at least 4 m² is required. Ideally, this technical is situated as close to the living wall as possible. The containers are made of high quality aluminium and all sides include an insulation layer with a drainage layer at the bottom. If desired, the containers can be supplied in any RAL colour.



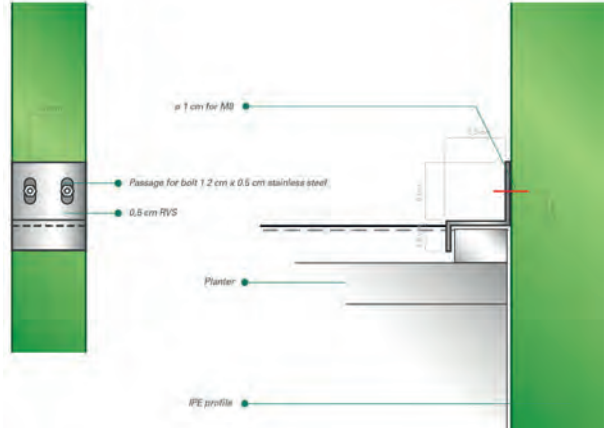
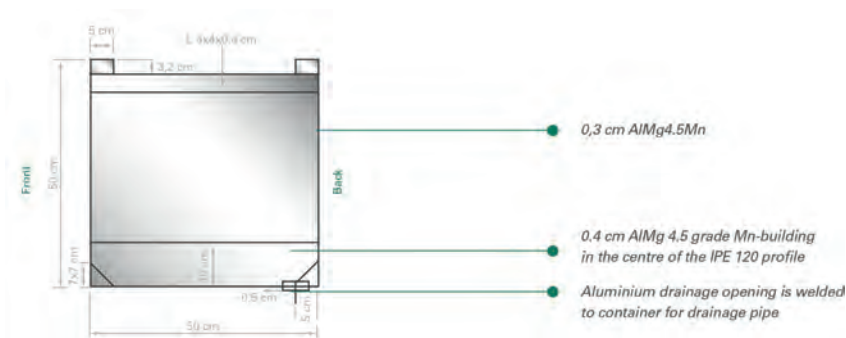
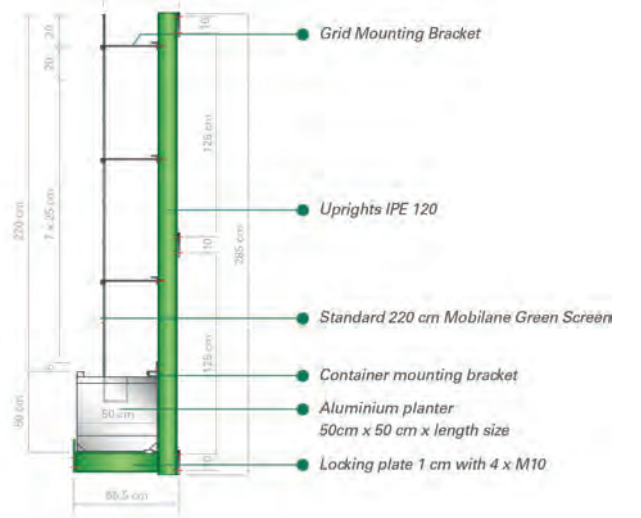
DIMENSIONS

The standard planter has the following dimensions: 50x50x390 cm. Other lengths (260 cm, 130 cm, and customised sizes) are possible. The Mobilane Green Screens in the planters are up to 220 cm high. The total height of an element (including Planter and support points) is 285 cm. The total weight of a standard container of 390 cm length and 220 cm high Mobilane Green Screen is 1450 kg (maximum saturated state). This is equivalent to the weight of approximately 140 kg per m² green wall surface.



PLACING AND WATERING

	WallPlanter
Indoor	
Outdoor	●
Watergift	
Manual	
Tank	
Irrigation system	●



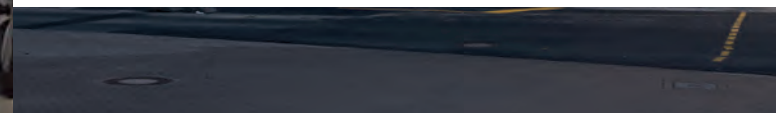
REFERENCES AND APPLICATIONS



MULTISTOREY CAR PARK



UTILITY CONSTRUCTION



MULTISTOREY CAR PARK



UTILITY CONSTRUCTION



CASE STUDY



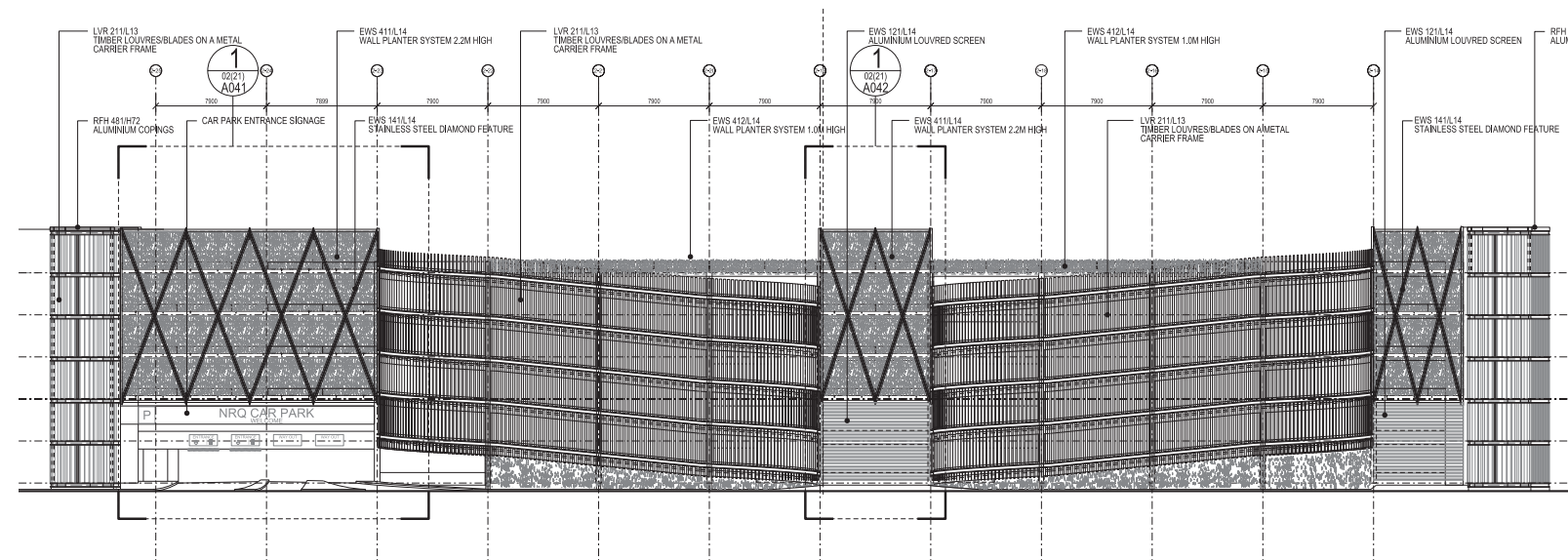
PROJECT INFORMATION

Commissioned by The Bracknell Regeneration Partnership (BRP), a dull, grey and run-down residential area with post-war architecture has been transformed into a hypermodern shopping centre with lots of green elements. In England Lexicon Bracknell, more than 1500 m2 of green façade has been realized with the WallPlanter system. The green transformation is an important development in the creation of a sustainable and natural environment within the Lexicon shopping centre. The Lexicon has a retail area of approximately 11 football fields. The large-scale application of greenery is a key part of the project developer's philosophy.

FULLY GROWN

The WallPlanter system consists of aluminium planters in which Mobilane Green Screens are placed. A fully covered green façade is created immediately upon delivery without having to wait for years. The ground floor, elevator shafts and walkways, among other things, get a friendly and natural appearance. In addition, the Mobilane Green Screens also capture fine dust and reduce CO₂.

CLIENT : Bracknell Regeneration Partnership (BRP)
ARCHITECT: BDP.
CONTRACTOR: Hedera Screen
YEAR OF CONSTRUCTION : 2017
LOCATION : Bracknell, UK



CAD AND BIM

All CAD and BIM models can be downloaded from the Mobilane website www.mobilane.com or by scanning the QR-code. CAD and BIM can be used for Revit, IFC, and Civil 3D by architects, engineers and construction professionals (AEC).

**SCAN FOR CAD AND
BIM MODELS**

