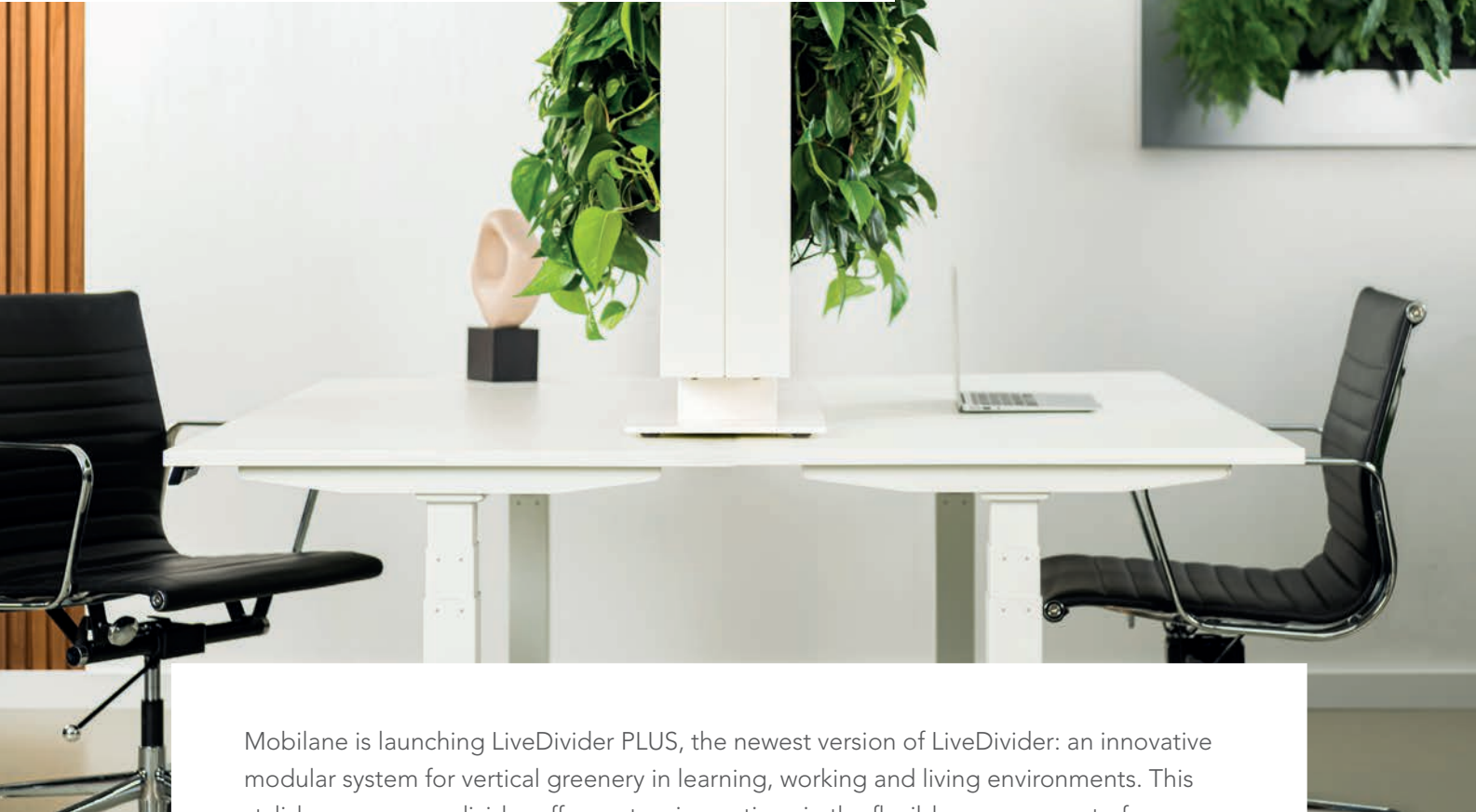




LIVEDIVIDER PLUS

LiveDivider PLUS®



Mobilane is launching LiveDivider PLUS, the newest version of LiveDivider: an innovative modular system for vertical greenery in learning, working and living environments. This stylish green room divider offers extensive options in the flexible arrangement of rooms to create exactly the amount of privacy and distance required, while retaining the room's open aspect. The room divider's warm, bright and sustainable appeal makes it a perfect solution for waiting rooms, meeting rooms and flexible workspaces.

A CLEVER STACKABLE SYSTEM

LiveDivider PLUS is a unique modular system in which one, two or three modules with interchangeable cassettes that serve as planters are vertically stacked on top of each other. This makes the LiveDivider PLUS a highly flexible, space-saving room divider with extensive possibilities in terms of application.

HEALTHY INDOOR CLIMATE

The plants on both sides of the room divider absorb ambient noise and improve the indoor climate by producing oxygen and absorbing carbon dioxide and pollutant particles. The plants get their water from an internal water buffering system that makes use of capillary action. This ensures that the plants are constantly supplied with water for four to six weeks. The system works without electricity or batteries.



LIVEDIVIDER PLUS MATERIALS



Cassettes: the front of the cassettes is made of air permeable Expanded Polypropylene (EPP). The backside is made of polypropylene (PP). The cassettes are fitted with capillary microfibre textile woven from 80% polyester and 20% polyamide. All materials can be reused and are fully recyclable.



Frame: the base plate and frame are made of powder-coated steel and are fully recyclable.



Tank: the tank which holds the water for the LiveDivider PLUS is made of polyvinyl chloride (PVC) and is fully recyclable.

Plants: the plants used in the pre-cultivated cassettes in the LiveDivider PLUS are grown at the Dartplant production site working according to 'On the way to PlanetProof' certification. This independent quality mark proves that the plants for the LiveDivider PLUS have been produced more sustainably and are therefore a better choice for nature, climate and animals. The online Mobilane PlantGuide gives an overview of selected plant species that are recommended for planting the LiveDivider PLUS.



UNIQUE FEATURES

Modular and multi-applicable

Maintains water supply for 4-6 weeks, with water level gauge

Sustainable, reusable and fully recyclable

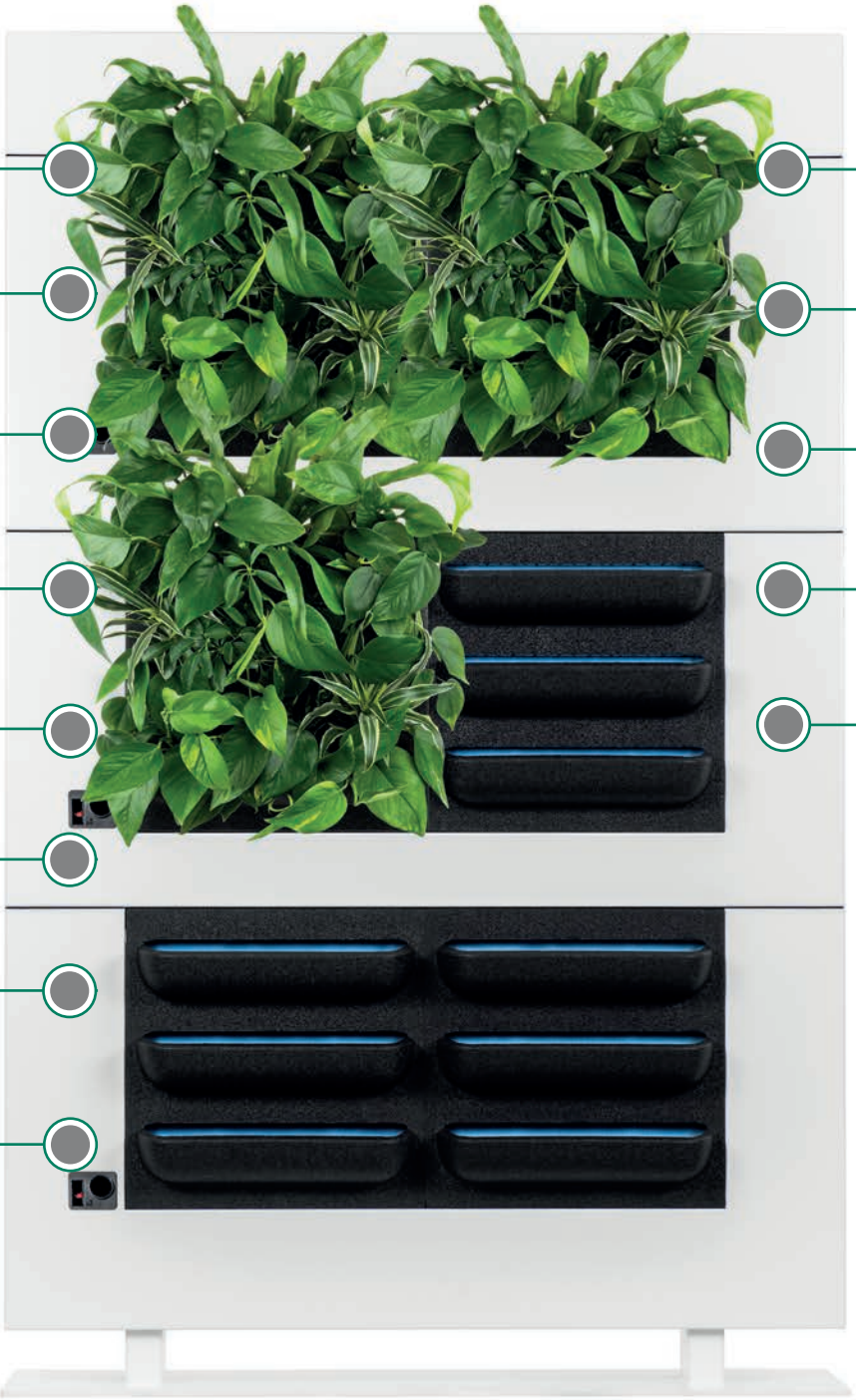
No electricity, pump or water drainage required

Low maintenance

High quality design

Free-standing with plants on both sides

Interchangeable planter cassettes with space for different types of plants



BENEFITS

A simple and sustainable way to divide spaces

Improves acoustics and dampens sound

Improves the indoor climate and air quality

Improves concentration, productivity and general well-being, reduces stress

Takes up little space



LiveDivider PLUS 1

LiveDivider PLUS 2

LiveDivider PLUS 3

The LiveDivider PLUS 1 consists of a base plate, a base module and a cover.

The LiveDivider PLUS 2 consists of a base plate, a base module, a plus module and a cover.

The LiveDivider PLUS 3 consists of a base plate, a base module, two plus modules and a cover.



SPECIFICATIONS LIVEDIVIDER PLUS

Description	Dimensions (W x H x D)	Number of cassettes	Weight (empty)	Content in litres
LiveDivider PLUS 1	112 x 81 x 19 cm	4	57.4 kg	17.5 Litres
LiveDivider PLUS 2	112 x 131 x 19 cm	8	76.0 kg	35 Litres
LiveDivider PLUS 3	112 x 180.5 x 19 cm	12	94.6 kg	52.5 Litres

AVAILABLE COLOURS



White



Black

The LiveDivider PLUS is available in white (RAL 9003) and black (RAL 9004) as a standard and can be supplied in any RAL colour on request.



PARTS



BASE PLATE



BASE MODULE



PLUS MODULE



COVER



CASSETTE



INSTALLATION & MAINTENANCE



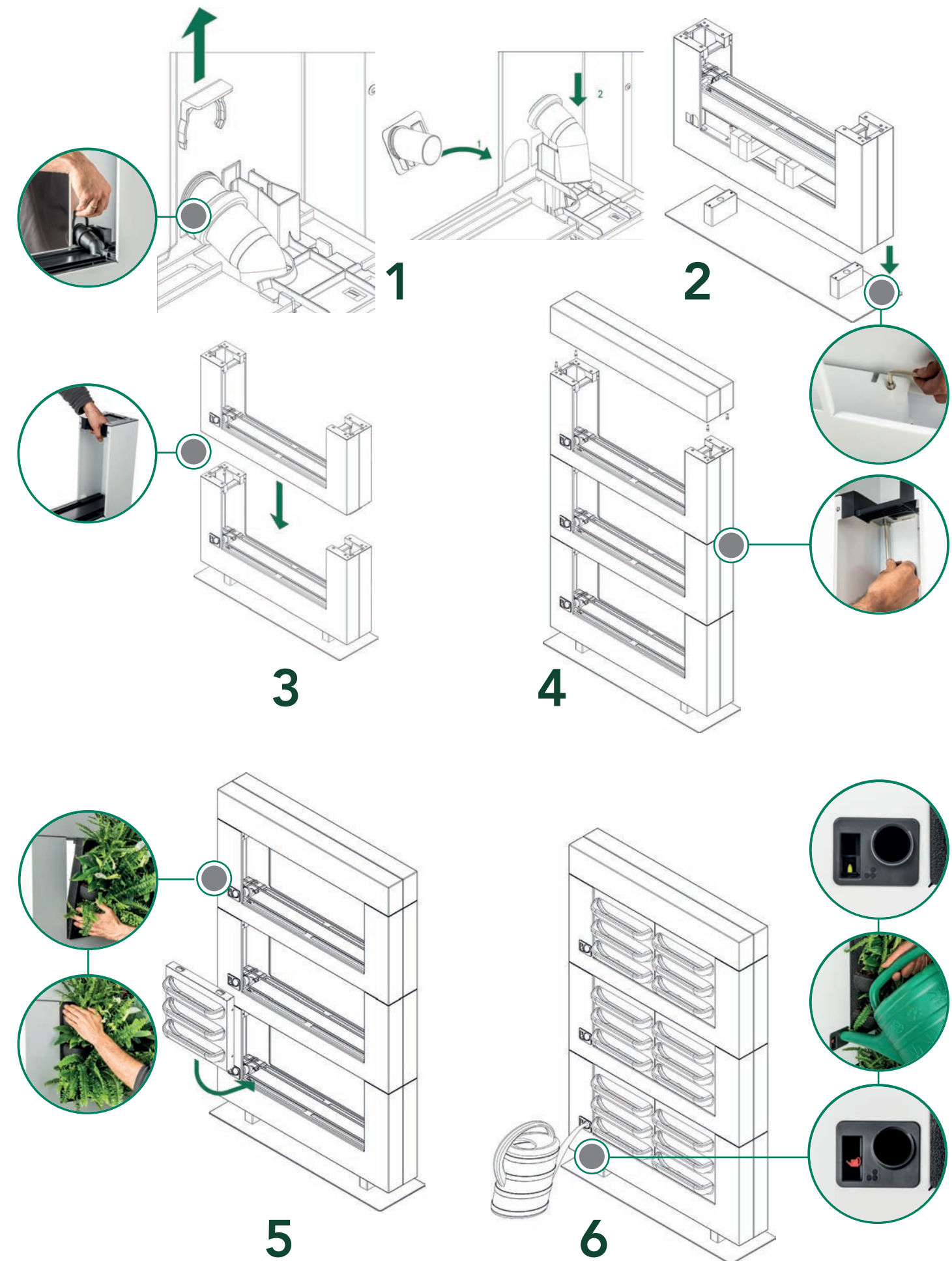
The LiveDivider comes with a installation manual. The modules can be easily stacked on top of each other and are attached to one another with four screws. The location of the LiveDivider PLUS should be taken into consideration when selecting the plants. Read the PlantGuide on the Mobilane website for tips.

RECOMMENDATIONS

- LiveDivider PLUS consists of a base module that can be expanded with one or two Plus modules as required. Two people are required for fast and proper installation of a LiveDivider PLUS.
- For optimal plant growth, it is recommend to use fertilizer like LiveFeed and to install the LiveDivider PLUS in a location with sufficient natural light.
- Each module has its own filling opening for watering.

PRUNING

The plants in the cassettes can be pruned throughout the year. Pruning dead or unhealthy material will stimulate new growth, making the plants become fuller and more compact and helping them retain their green and fresh appearance.



REFERENCES AND APPLICATIONS

OFFICES



PLANTGUIDE

The Mobilane PlantGuide provides a plant-by-plant overview of selected species used in the different Mobilane products. Although there are thousands of plant types in the world, not all are suitable in all situations or applications. Each plant has its own characteristics, ideal conditions and preferred planting location. Factors that should be taken into account when choosing a plant for green walls and façades include temperature, climate zone, sun exposure, shade, soil type, moisture requirement and surface orientation. Contact Mobilane Technical Support for advice or further information.

Mobilane has developed some standard indoor mixes with plants that combine well with each other. These mixes are grown in the nursery so that they are fully grown when delivered.

STANDARD INDOOR MIXES



LEMON SURPRISE

1. Epipremnum 'Aureum'
2. Asplenium nidus
3. Dracaena 'Lemon Surprise'
4. Schefflera arboricola
5. Philodendron scandens



BREATH OF FRESH AIR

1. Nephrolepis 'Duffy'
2. Calathea Amabilis
3. Spathiphyllum 'Cupido'
4. Phlebodium 'Blue Star'
5. Nephrolepis 'Green Lady'



SUNSHINE

1. Croton 'Petra'
2. Philodendron 'Brazil'
3. Fittonia 'Skeleton'
4. Epipremnum 'Golden Pothos'



STONE ON STONE

1. Schefflera arboricola
2. Muehlenbeckia complexa
3. Dracaena 'Janet Craig'
4. Philodendron scandens



SCHUMI RED

1. Nephrolepis 'Duffy'
2. Peperomia 'Schumi Red'
3. Fittonia 'Bianco Verde'

PLANTGUIDE

INDOOR PLANTING



AGLAOMORPHA CORONANS 'SNAKE LEAF'

A fern related to the well-known oak fern. Air-purifying with beautiful bright green, slightly shiny leaves.



AGLAONEMA 'CRETE'

The Aglaonema 'Crete' is an easy plant to grow, enjoying a reasonably light spot avoiding direct sunlight. Distinctive pink/red stems and leaves.



AGLAONEMA 'MARIA'

The Aglaonema 'Maria' is an easy plant, growing best in a reasonably light spot but not in direct sunlight. Green leaf with a light pattern.



ASPENIUM NIDUS

Also called the nest fern, from the stripe fern family. Bundled, 50 to 150 cm long light green undivided leaves, with a black midrib and corrugated leaf margins. Ideal for sunny or shady areas.



CHLOROPHYTUM COMOSUM 'BONNIE'

Also known as Grass Lily. Known for air purifying qualities. A strong plant with tubers in the soil that contain reserve food.



CHLOROPHYTUM COMOSUM 'OCEAN'

The Chlorophytum comosum 'Ocean' is a simple air-purifying plant. Also known as Zebra Grass due to its white leaf stripes and white outer edge.



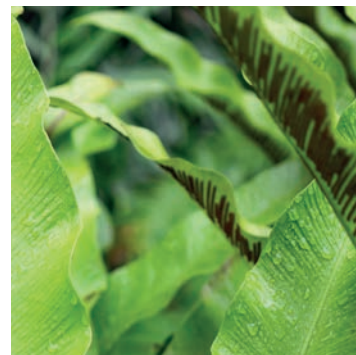
ASPARAGUS FALCATUS

The Asparagus falcatus is a thorny plant, a cross between an asparagus plant and a curly fern. Easy to care for, it grows best in a reasonably light spot away from full sun.



ASPARAGUS SETACEUS

A graceful plant with fine lace-like, needle-shaped leaves. Resembles a fern but is actually an ornamental asparagus.



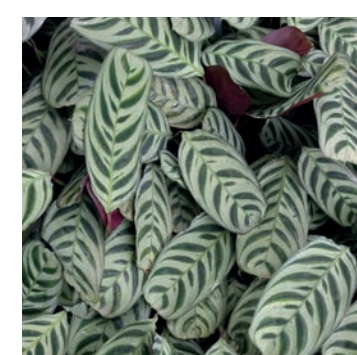
ASPENIUM 'LESLIE'

Also called a nest fern in Dutch. Beautiful fresh leathery, shiny green color with wild curly leaves.



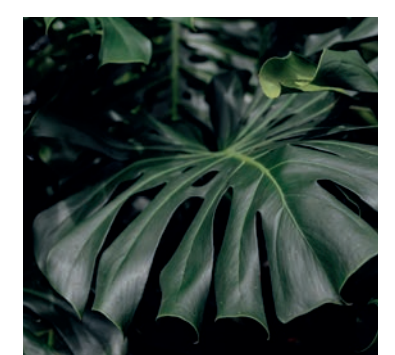
CODIAEUM (CROTON) VARIEGATUS 'PETRA'

An indoor plant with beautiful variegated leaves.



CTENANTHE BURLE-MARXII (VALATHEA AMABILIS)

The Ctenanthe Burle-Marxii (Calathea amabilis), also called Nel, is a good air-purifying plant, distinguished by its leaf pattern and dark red underside. At night the plant's leaves pull together and a rustling can be heard.



MONSTERA DELICIOSA

Also known as the Swiss Cheese Plant, this air-purifying creeping climbing plant also does well in darker places. The Monstera is known for its large, shiny, holey leathery leaves.



PLANTGUIDE

INDOOR PLANTING



DRACAENA FRAGRANS 'JANET CRAIG'

A large plant with deep green leaves. Ideally suited for a shady spot in the room or office, preferably not to be placed in direct sunlight.



DRACAENA FRAGRANS 'LEMON SURPRISE'

Beautiful broad green leaves with lime-coloured edges.



DRACAENA FRAGRANS 'MALAIKA'

The Dracaena, also known as the Dragon Plant, is an easy to care for plant that also helps purify the air. It thrives in full sun as well as shade.



EPIPREMNUM 'AUREUM'

Lauded as one of the best most air-purifying plants. Beautiful green leaves and easy to maintain.



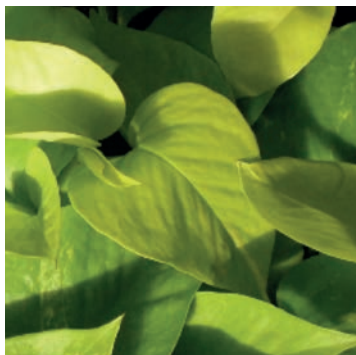
FITTONIA VERSCHAFFELTII 'BIANCO VERDE'

Characteristic silver veins on the leaves. Requires minimal water and is very easy to maintain.



FITTONIA 'SKELETON'

Small plant with an attractive leaf pattern of pink on lime green.



EPIPREMNUM 'GOLDEN POTHOS'

Lauded as one of the best most air-purifying plants. Beautiful light green golden yellow leaves and easy to maintain.



EPIPREMNUM 'MARBLE QUEEN'

The Epipremnum 'Marble Queen' is an air-purifying plant with variegated leaves. The plant grows best in a light spot, away from full sun.



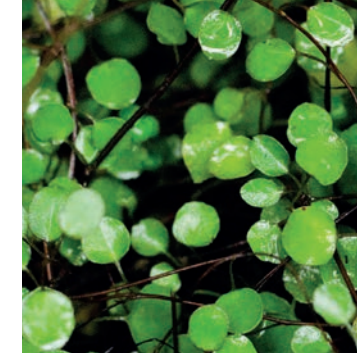
EPIPREMNUM 'N'JOY'

The Epipremnum 'N'Joy' is an air-purifying plant that grows best in a light spot rather than full sun. The plant is characterised by its white spotted leaves.



MICROSORUM DIVERSIFOLIUM

The Microsorium diversifolium is also called the Kangaroo Fern. The plant grows best in a sheltered place. The dark green leaves are deeply incised and have black petioles.



MUEHLENBECKIA COMPLEXA

A graceful plant with small leathery and slightly heart-shaped leaves.



NEPHROLEPIS CORDIFOLIA 'DUFFY'

Also known as the Curly Fern. A strong plant with an abundance of fringes and frizzy leaves.



PLANTGUIDE

INDOOR BEPLANTING



NEPHROLEPIS EXALTATA 'GREEN LADY'

A beautiful bright green curly fern that keeps its colour all year round.



PEPEROMIA CAPERATA 'SCHUMI RED'

Compact and attractive plant that is easy to care for. Beautiful deep red colour with unique deep-backed leaves.



PEPEROMIA ROTUNDIFOLIA

Compact and attractive plant that is easy to care for. Beautiful deep red colour with characteristic small round leaves on long stems. The plant needs a lot of light but not direct sun.



PHILODENDRON SCANDENS 'BRAZIL'

Philodendron scandens 'Brazil' is a popular plant. Heart-shaped, glossy leaves with a yellow variegated colour. Grows best in a semi-shaded spot.



PLATYCERIUM BIFURCATUM

The Platycerium, also known as the stag horn fern, grows best in a light, shady spot. The mantle leaves are broad and round and provide support for the pendulous fertile leaves.



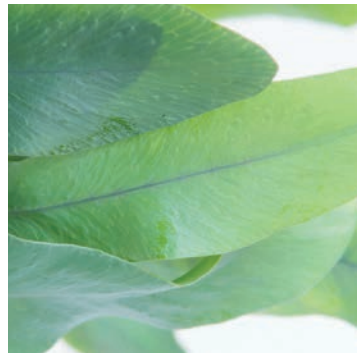
SCHEFFLERA ARBORICOLA

Known for its hand-shaped leaves. Requires little light, water and maintenance, which makes it ideal for interior planting.



PHILODENDRON MINIMA

The Philodendron minima is an easy-care plant and with air-purifying qualities. The plant grows well in a shady spot.



PHLEBODIUM AUREUM 'BLUE STAR'

A fern with beautiful, slightly wavy grey-blue leaves. Easily adapts to most conditions, but does not like bright sunlight.



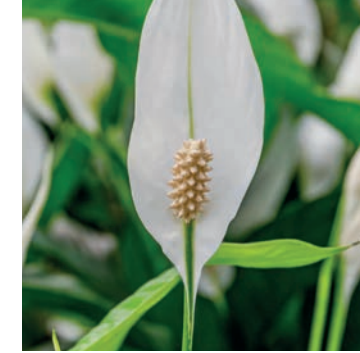
PHILODENDRON SCANDENS

A popular plant with heart-shaped, glossy leaves emerging bronze-coloured and then quickly turn green.



SCINDAPSUS PICTUS

The Scindapsus pictus is known as the Lucky Plant. The plant purifies the air and grows best in a place not directly in full sun. The plant is characterised by its small white dotted green leaves.



SPATHIPHYLLUM 'CUPIDO'

Renowned for their white spoon-shaped flowers and air-purifying qualities.



SYNGONIUM 'PIXIE'

Miniature climbing plant native to tropical rainforests with smaller leaves than most varieties that change shape as it grows.





LIVEFEED

LIVEFEED SPECIFICATIONS

Product	Description
LiveFeed - Hard Water	NPK fertiliser solution, developed for water with average CaCO3 hardness of: 100-350 mg/l, dH: 5.6-19.7, fH: 10-35, eH: 6.9-24.5.
LiveFeed - Soft Water	NPK fertiliser solution, developed for water with average CaCO3 hardness of: 0-150 mg/l, dH: 0-8.4, fH: 0-15, eH: 0-10.5.

NPK stands for the nutrient elements in the LiveFeed fertiliser: Nitrogen (N), Phosphorus (P) and Potassium (K) are essential nutrients for plants. Nitrogen is required for plant growth. Phosphorus ensures the development of roots, buds and flowers. Potassium adds strength, resilience and transfers water and carbohydrates.

LiveFeed is an NPK fertiliser and appropriate for the following products: manually water-filled LivePanel, LivePanel PACK, LivePicture, LivePicture GO and LiveDivider PLUS. LiveFeed consists of liquid plant nutrition, keeping plants strong and healthy with essential nutrients and a rich mixture of trace minerals. LiveFeed ensures plants grow and bloom beautifully.

