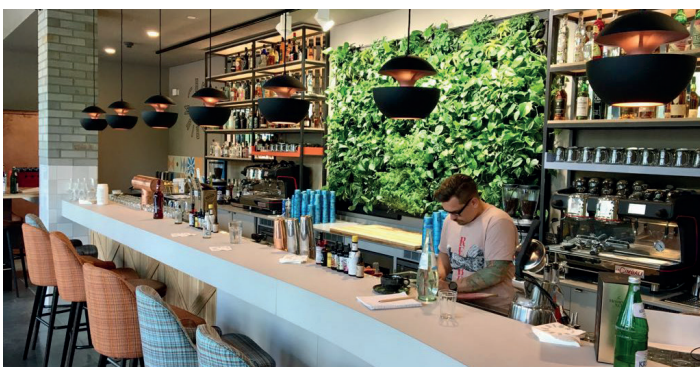


LivePanel®

Indoor and outdoor green wall system



FACTS

LivePanel is the innovative green wall system developed by Mobilane. LivePanel sustainably adds a warm, living surface to any learning, working or living environment. The modular green wall system consists of green profiles which work as a water tank and interchangeable plant cassettes with slots holding the plants. LivePanel can be affixed to new or existing walls in indoor or outdoor environments. The various sizes and creative plant options make LivePanel a flexible, space-saving green wall system with an unlimited range of applications.

BENEFITS

- Improves air quality through oxygen production and fine dust absorption
- Temperature and noise insulation
- Aesthetic value
- Space-saving
- Enhances the ambience
- Easy and quick installation
- Lightweight (maximum 40 kg/m²)

FEATURES

- Manual or automatic irrigation
- Slim system
- Modular system for indoor and outdoor
- Creative freedom of design and plant selection
- Simple exchange of plant cassettes
- Fully recyclable
- Low maintenance

Indoor	Outdoor	Garden	Balcony	Public space	Retail
Hospitality	Shopping centre	Hospital	Car park	Office	School

TECHNICAL INFORMATION

DIMENSIONS

The maximum profile length is 520 cm excluding end caps. Lower walls are built by installing a series of profiles next to each other. The two types of end caps (blind and water supply) can be attached to the wall in a mirror formation. Water supply is provided for every 520 cm of wall length. The modular plant cassette dimensions are 40 x 40 cm.

WEIGHT

Maximum weight including plants and water: 40 kg/m².

PROFILES

Both the profiles and the optional frame can be easily customised by the installer. The cassettes can be sawed at the dotted line on the back of the cassette.

COLOURS

The profiles are made of black anodised aluminium. The frame is delivered as standard in clear anodised aluminium and can be provided in any RAL colour on request.

RECOMMENDATIONS

- If the LivePanel is installed on the inside of insufficiently insulated outdoor walls (façades), add XPS insulation with a thickness of at least 20 mm to the inner wall. These plates as well as any seams in between must have a fully airtight and humidity-proof finish. This provides thermal protection of the outer wall, limiting the risk of mould and condensation.
- For larger walls, we recommend installing an automatic irrigation unit. Take the following into account: average water consumption of 5 l/m² of greenery surface area per week for indoor walls. This depends on local factors such as type of plants, ambient temperature, air conditioning and amount of light. Automatically irrigated walls require an overflow to a drain or another type of drainage.