



5.1.1

WallPlanter

The Green Facade

In 2002 Mobilane developed the WallPlanter living wall system incorporating the innovative Mobilane Green Screen fencing. WallPlanter is now a tried and tested product providing an instant fully planted finish which has proven to be highly successful over a number of years on both new and existing facades.

WallPlanter consists of large specifically designed customized aluminium planters in which fully grown hedge elements (Mobilane Green Screen) can be placed. These planters are placed on the facade of the project. These buildings include: car parks, hotels, office buildings.

Using a fully automated irrigation and drainage system, hedges receive water and nutrients, allowing the hedge to develop, keeping the green facade looking spectacular year after year. A green facade adds to the attraction of the area for residents, visitors and potential buyers.



5.1.2

The benefits

- Efficient use of vertical surfaces
- Improves air quality in urban areas
- Promotes biodiversity
- Improves the surrounding area for residents and visitors
- Significantly reduces sub micron particle pollution
- Reduces noise
- Graffiti prevention

Technical specifications

Dimensions: The standard planter has the following dimensions: 50x50x390 cm. Other lengths (260 cm, 130 cm, and customised sizes) are possible.

Height of each element: The Mobilane Green Screens in the planters are up to 220 cm high. The total height of an element (including Planter and support points) is 285 cm.

Weight: The total weight of a standard container of 390 cm length and 220 cm high Mobilane Green Screen is 1450 kg (maximum saturated state). This is equivalent to the weight of approximately 140 kg per m² green wall surface.

Supporting structure: Due to the weight of the WallPlanter elements, a robust support structure is necessary. This supporting structure, depending on the strength of the wall and the foundation, is attached to the wall or resting on the base.

Apply to support construction: The planters will be installed on the support structure using a crane.

Irrigation: Each planter is supplied with water and nutrients through an irrigation system. In order to avoid too much water remaining in the plant (for example, in heavy rain), each plant container is also provided with drainage. This also ensures the supply of oxygen to the plant roots.

Technical area: For the supply of water and nutrients a technical area of at least 4 m² is required. Ideally, this technical is situated as close to the living wall as possible.

Containers: The containers are made of high quality aluminium and all sides include an insulation layer with a drainage layer at the bottom. If desired, the containers can be supplied in any RAL colour.

Other technical details are presented in the following pictures.

References and examples of applications



5.2.1



5.2.2



5.2.3

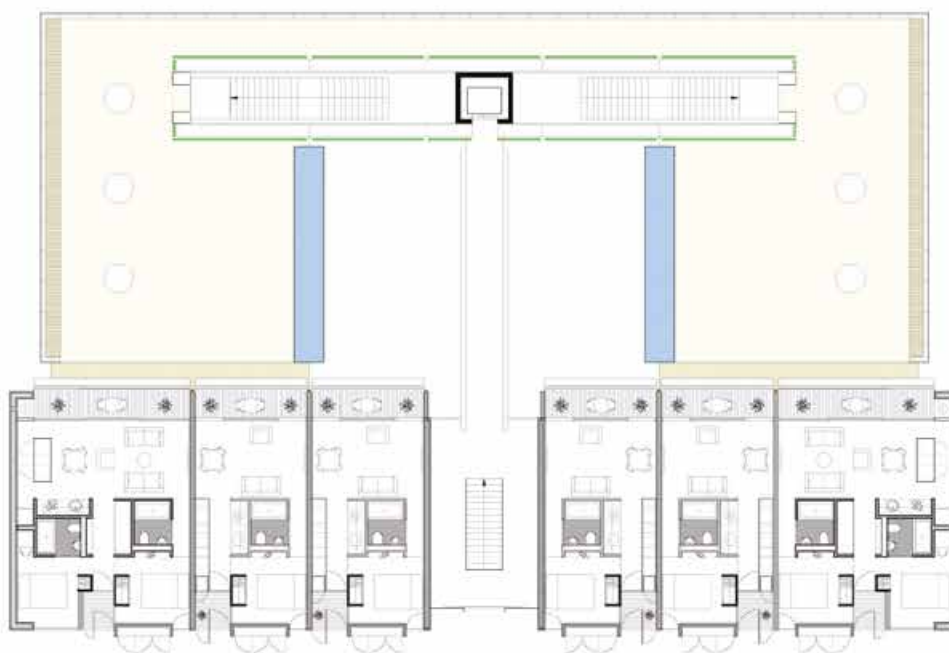


5.2.4

References and examples of applications



5.3.1



5.3.2

References and examples of applications



5.3.3



5.3.4



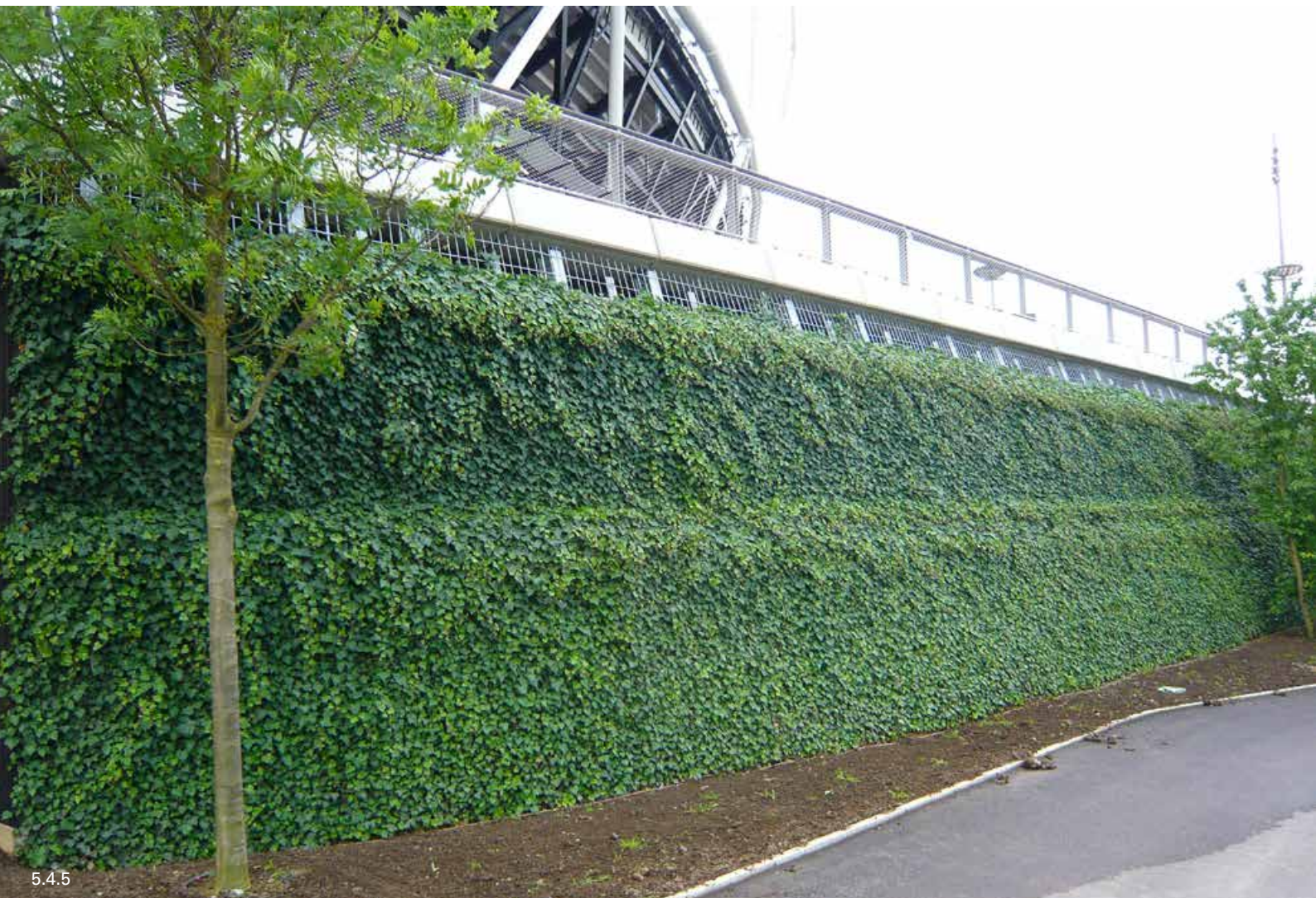
5.3.5



References and examples of applications



References and examples of applications



Planter 3900 mm

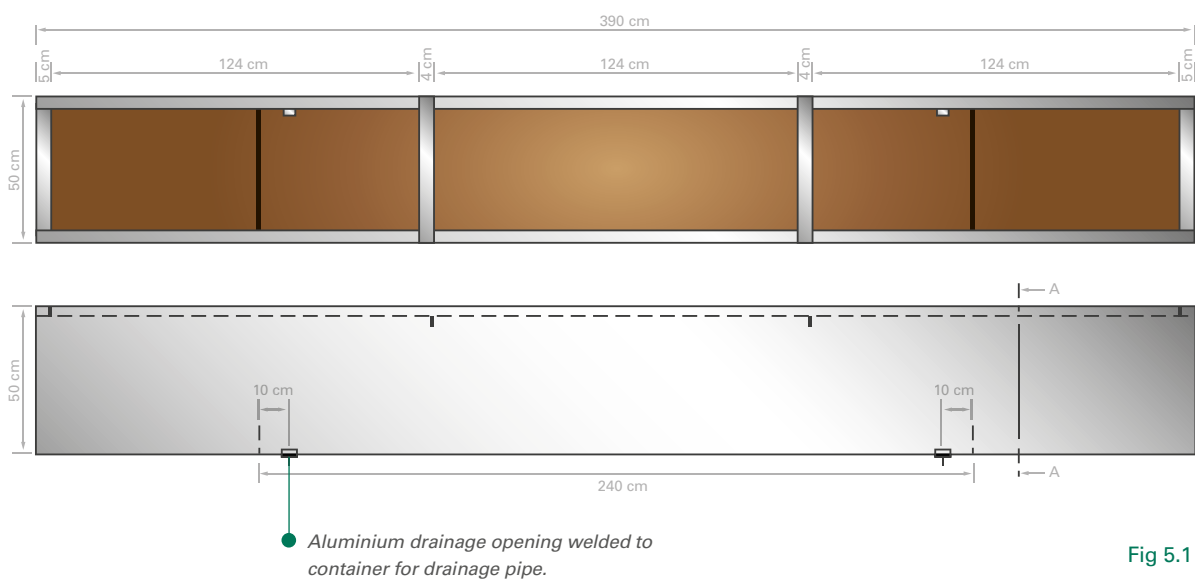


Fig 5.1

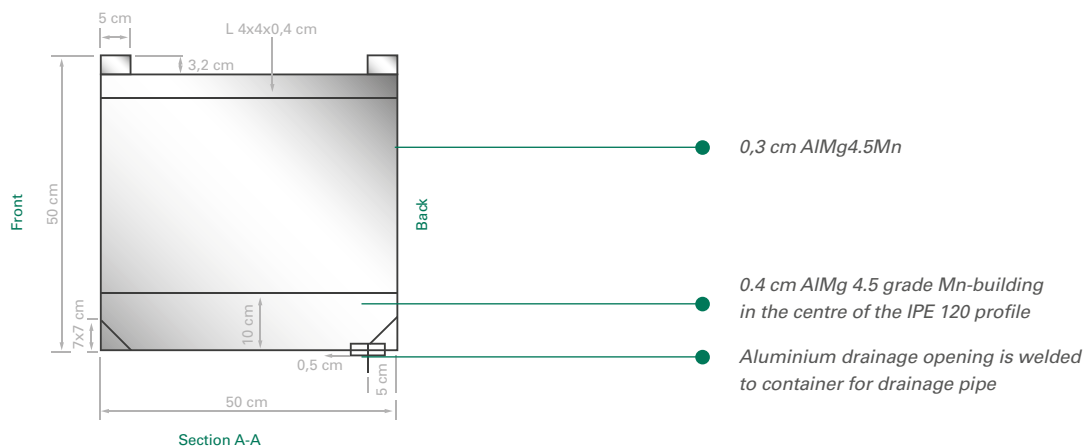


Fig 5.1 b

Also available in 260 cm, 130 cm and special sizes.

Passage for bolts

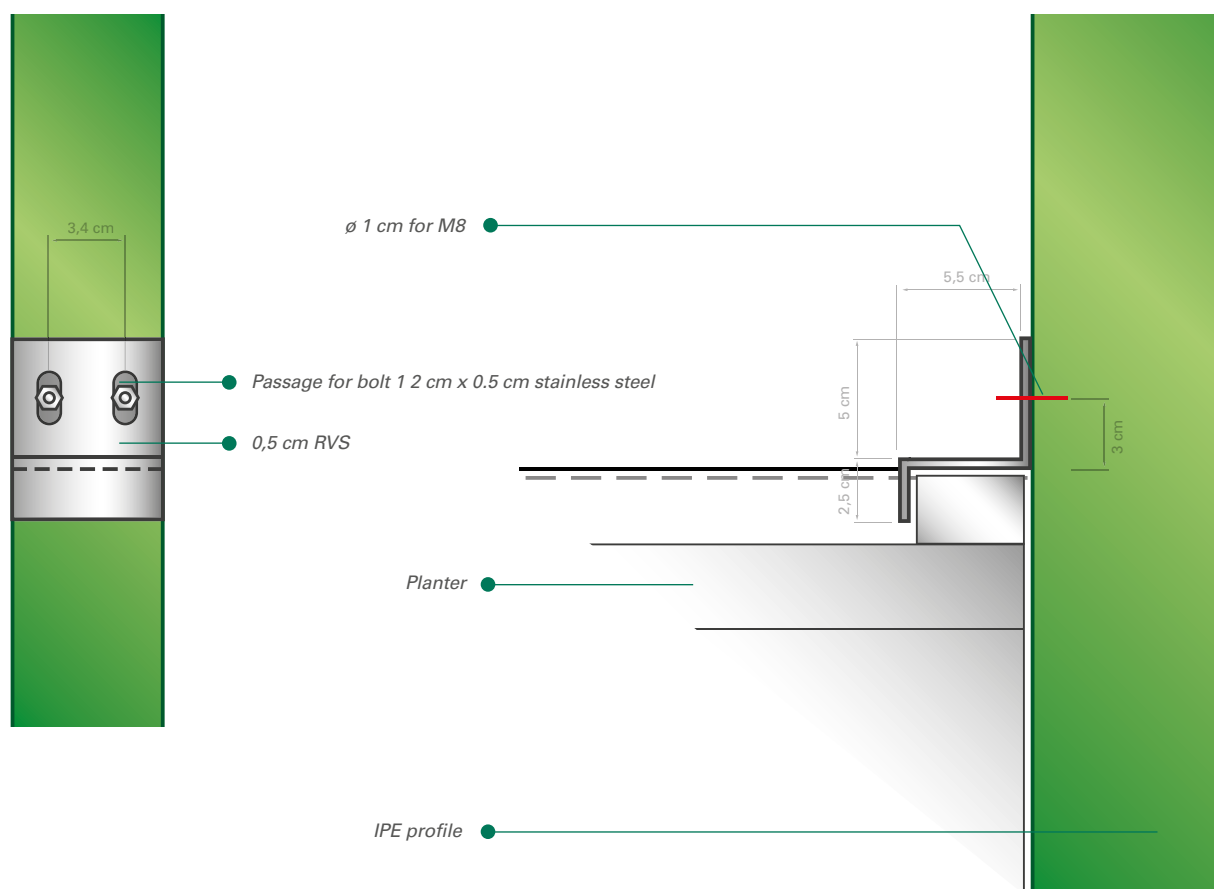


Fig 5.2

Grid Mounting Bracket



Steel construction



5.6.5



5.6.6



5.6.7



5.6.8



5.6.9



5.6.10

Example construction drawing

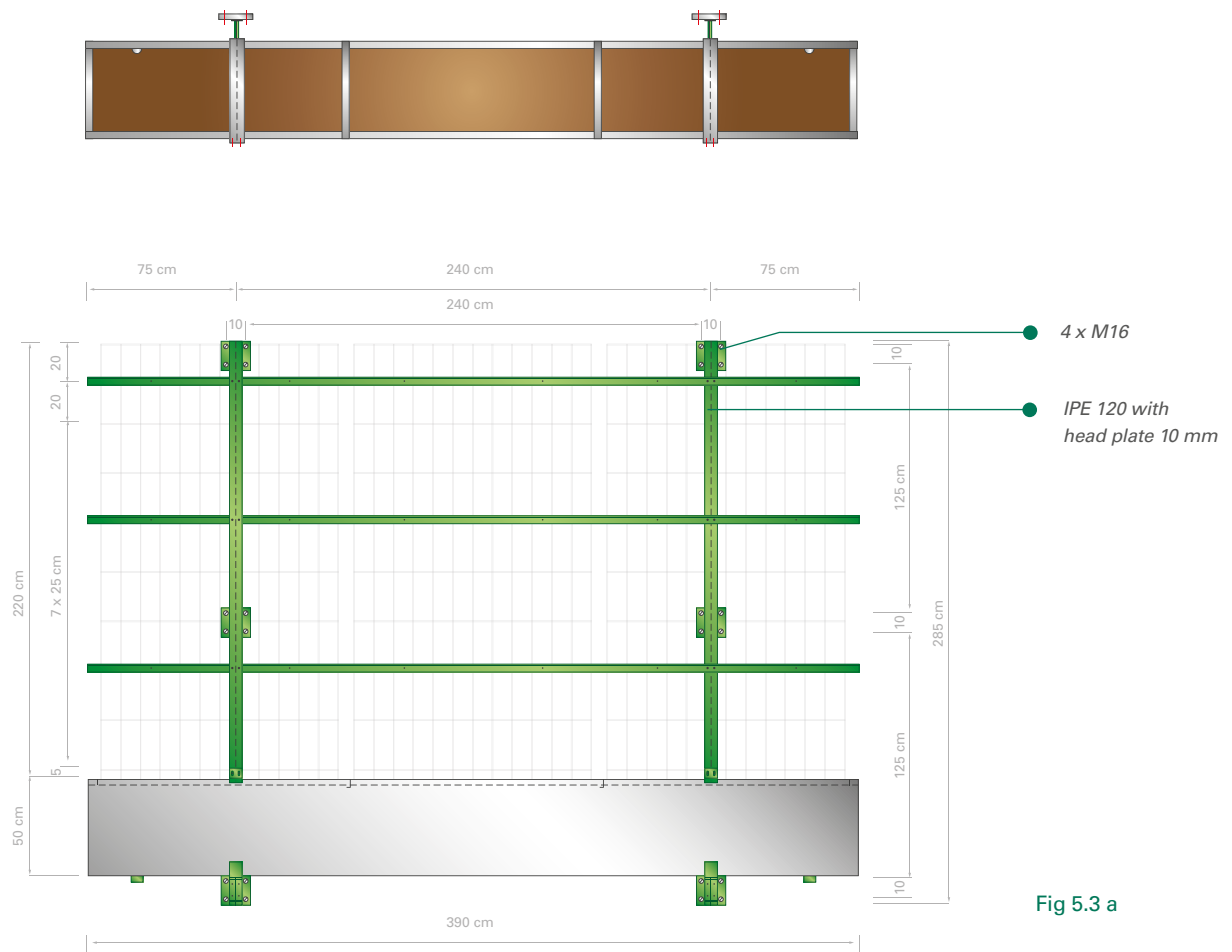


Fig 5.3 a

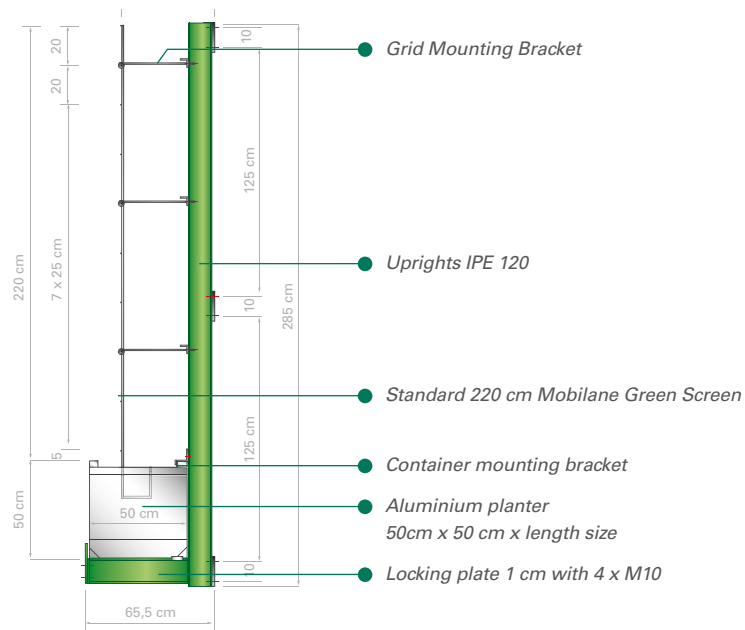


Fig 5.3 b

AUTOCAD drawings are available at our Mobilane website: Mobilane.eu

Placing the planted containers



5.7.1



5.7.2



5.7.3



5.7.4



5.7.5

STABU Specifications text *

31.31.39 c- CONSTRUCTION WALL vegetation, LANDSCAPING AND MAINTENANCE

0. **WALL CONSTRUCTION vegetation**

- Climate conditions during execution:
- Minimum outside temperature: **0 °C**

1. **LANDSCAPING**

Supplier: Mobilane UK

Type: Mobilane Wallplanter

Size (hxl): 2850x3900 mm

Planting:

- type: Green Screen
- format: Ivy - Hedera helix ,Woerner'
- dimensions: 1205x2200 mm and 1205 x 1800mm

Container:

- material: aluminium
- size: 3900x500x500 mm, 3mm thick
- a container provided with insulation, drainage and drainage socks

Colour: RAL-colour optional

Fixing: in consultation with the supplier

Weight: 1250-1450 kg

Substrate: substrate supplier

Irrigation: computerised irrigation system

Accessories:

- fastening

2. **MAINTENANCE**

Fertilisation:

- the application of fertiliser with an NPK ratio according to instructions from vendor
- Frequency: dissolved in irrigation water
- Quantity: according to instructions supplier

Pruning:

- pruning/flipping of hedge elements
- Frequency: 2 times a year

.01 **OUTER WALL**

3: WALL VEGETATION.

Other sizes available height 2300 mm & 1500 mm, height 2600 mm and 1300 mm, other sizes in consultation with the supplier.

Alternative planting possible.

*** Standard specification texts are also available in RAW system.
All technical specifications can be downloaded from our website
mobilane.co.uk**

